

exact

Pipe Cutting System



TWO NEW CORDLESS MODELS



NEW INFINITY SAW



PROFESSIONAL PIPE CUTTING POWER TOOLS

WHY CHOOSE?

exact Pipe Cutting System

- Unique Exact Method to Cut Pipes
- Safe, Accurate, and Fast
- Speed: Cut 6" Steel Pipe with an 1/8" Wall in Less than 20 Seconds
- Cut Steel, Plastic, Copper, Cast Iron, Stainless Steel, and Multi-Layer Pipes
- Improve Safety, Accuracy, and Speed on the Jobsite

PRO SERIES: PIPE SAWS FOR HEAVY DUTY PIPES

NEW!

Infinity Saw

| | |
|------------------------|---|
| Capacity Range* | 14" – 73" with Standard Kit 73" + by adding chain segments |
| Steel Wall Thickness | .5" |
| Plastic Wall Thickness | 1.7" |
| Motor | 15 Amp |
| Weight | 28 lb Shipping Weight 68 lb |

*Additional Chain Segments Sold in 78" Increments

*Uses a Chain Tracking Mechanism to Facilitate the Cut



Standard Equipment: PipeCut Infinity Motor Unit & Cermet 165 Blade, 2 Shoulder Bags, Tensioner Device, Tensioner Device w/ Crank, Chain segments for attaching saw to pipe: 78" 2 pcs • 39" 1 pc • 20" 1 pc • 8" 2 pcs • 4" 1 pc, Allen Keys (2mm, 5mm)
*Diamond 165 Cut/Bevel Blade comes with INFINITY CUT/BEVEL Saw

3 Different Options

- **INFINITY:** Standard Kit with Manual Crank
- **INFINITY CUT & BEVEL:** Cuts & Bevels Cast/Ductile Iron & Cuts Multi-Layer Pipe
- **INFINITY PLUS:** Includes Gearbox for Cordless Drill Assisted Operation

PipeCut 220 Pro

| | |
|------------------------|---------------------|
| Capacity Range | .8" – 8.7" OD Pipes |
| Steel Wall Thickness | .6" |
| Plastic Wall Thickness | 1.4" |
| Motor | 15 Amp |
| Weight | 25 lb |

Built-in Laser for Precise Cutting

"Traffic Light" Indicators Provide Overload Protection

Standard Equipment:

PipeCut 220 PRO Saw, TCT 165 Blade, Shoulder Bag, 4 Pipe Supports, Allen Keys (2mm, 5mm)

PipeCut 220 Pro Cut & Bevel

| | |
|----------------|---------------------|
| Capacity Range | .8" – 8.7" OD Pipes |
|----------------|---------------------|

Cut & Bevel Ductile/Cast Iron at the Same Time

Also Includes: Diamond Cut Bevel Disc 165 mm and Specific Blade Guard for it



PipeCut 220 Pro



PipeCut 220 Pro Cut & Bevel

PipeCut 280 Pro

| | |
|------------------------|-------------------|
| Capacity Range | 2" – 11" OD Pipes |
| Steel Wall Thickness | .5" |
| Plastic Wall Thickness | 2" |
| Motor | 15 Amp |
| Weight | 34 lb |

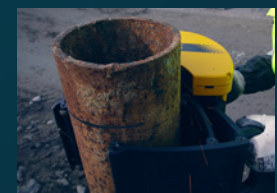
Built-in Laser for Precise Cutting

"Traffic Light" Indicators Provide Overload Protection

Standard Equipment: PipeCut 280 PRO Saw, TCT 165 Blade, Shoulder Bag, 4 Pipe Supports, Allen Keys (2mm, 5mm)



PipeCut 280 Pro



PipeCut 360 Pro

Capacity Range 3" – 14" OD Pipes

Steel Wall Thickness .5"

Plastic Wall Thickness 2"

Motor 15 Amp

Weight 36 lb

Built-in Laser for Precise Cutting

"Traffic Light" Indicators Provide Overload Protection

Standard Equipment: PipeCut 360 PRO Saw, TCT 165 Blade, Shoulder Bag, Heavy Duty Pipe Supports (2 Single, 1 Double), Allen Keys (2mm, 5mm)

PipeCut 360 Pro Cut & Bevel

Capacity Range 3" – 14" OD Pipes

Cut & Bevel Ductile/Cast Iron at the Same Time

Also Includes: Diamond Cut Bevel Disc 165 mm and Specific Blade Guard for it

PipeCut 460 Pro

Capacity Range 4" – 18" OD Pipes

Steel Wall Thickness .5"

Plastic Wall Thickness 2"

Motor 15 Amp

Weight 39 lb

Built-in Laser for Precise Cutting

"Traffic Light" Indicators Provide Overload Protection

Standard Equipment: PipeCut 460 PRO Saw, TCT 165 Blade, Shoulder Bag, Heavy Duty Pipe Supports (2 Single, 1 Double), Allen Keys (2mm, 5mm)

STAINLESS STEEL SAWS

PipeCut 220 INOX

Capacity Range .8" – 8.7" OD Pipes

Max Pipe Wall .5"

Motor 15 Amp

Weight 25 lb

Stainless Steel Rollers and Blade Guard Touch Point

Built-in Laser for Precise Cutting

"Traffic Light" Indicators Provide Overload Protection

Standard Equipment: PipeCut 220 INOX Saw, 140 INOX Blade, Shoulder Bag, 4 Pipe Supports, Allen Keys (2mm, 5mm)

PipeCut 360 INOX

for Stainless Steel Applications

Capacity Range 3" – 14" OD Pipes



PipeCut 360 Pro



PipeCut 360 Pro
Cut & Bevel



PipeCut 460 Pro





WE CUT THE PIPES AND NOW WE'VE CUT THE CORD!

CORDLESS SAWS

170 Cordless Kit

| | |
|------------------------|------------------------|
| Capacity Range | .6" – 6.7" OD Pipes |
| Steel Wall Thickness | 3/16" |
| Plastic Wall Thickness | 1/2" |
| Battery | 18V 5.0 AH Lithium Ion |
| Charge Time | 1 hour |



Standard Equipment:
PipeCut 170
Cordless Pipe Saw,
(1) Cermet 140 Thin
Blade Installed, Pipe
Supports (4) small,
Battery Charger, (2)
Exact 18V Lithium-Ion
Batteries, Shoulder
Bag, Instructions, 5mm
& 2mm Allen Keys.

P400 Cordless Kit

Cut & Bevel PVC at the Same Time!

| | |
|------------------------|-----------------------------------|
| Capacity Range | 2" – 16" OD Pipes |
| Plastic Wall Thickness | 7/8" Cutting, 5/8" Cut & Bevel |
| Battery | 18V 5.0 AH Lithium Ion |
| Charge Time | 1 hour |



Standard Equipment: PipeCut P400 Cordless Pipe Saw, (1) Cut+Bevel Blade Installed, (1) TCT P150 Blade, Pipe Supports (2) Single (1) Double, Battery Charger, (2) Exact 18V Lithium-Ion Batteries, Shoulder Bag, Instructions, 5mm & 2mm Allen Keys.



PipeCut 170E

| | |
|------------------------|---------------------|
| Capacity Range | .6" – 6.7" OD Pipes |
| Steel Wall Thickness | .31" |
| Plastic Wall Thickness | .55" |
| Motor | 9.2 Amp |
| Weight | 12 lb |

Standard Equipment: PipeCut 170E Saw, TCT 140 Blade, Shoulder Bag, 4 Pipe Supports, Allen Keys (2mm, 5mm)



PipeCut 220E

| | |
|------------------------|---------------------|
| Capacity Range | .6" – 8.7" OD Pipes |
| Steel Wall Thickness | .31" |
| Plastic Wall Thickness | .55" |
| Motor | 9.2 Amp |
| Weight | 13 lb |

Standard Equipment: PipeCut 220E Saw, TCT 140 Blade, Shoulder Bag, 4 Pipe Supports, Allen Keys (2mm, 5mm)

SPECIALTY SAWS

PipeCut P400

Cut and bevel at the same time

Capacity Range 2" – 16" OD Pipes

Plastic Wall Thickness 2"

Motor 8.4 Amp

Weight 36 lb

Standard Equipment: PipeCut P400 Saw, TCT P150 Blade, Cut & Bevel Blade, Shoulder Bag, Heavy Duty Pipe Supports (2 Single, 1 Double), Allen Keys (5mm)



PipeCut P1000

For large diameter plastic pipes

Capacity Range 2.3" – 40" OD Pipes

Plastic Wall Thickness 2.9"

Pipe Material Plastics (PP, PE, PVC, HDPE)

Motor 15 Amp

Weight 25 lb

Built-in Laser for Precise Cutting

Standard Equipment: PipeCut P1000 Saw, TCT 190 Blade, Shoulder Bag, 3 Pipe Supports, Allen Keys (2mm, 5mm)



PipeCut V1000

A new era for spiral duct cutting

Capacity Range 3" – 40" OD Pipes

Wall Thickness .06" – .023"

Motor 8.4 Amp

Weight 13 lb

Standard Equipment: PipeCut V1000 Saw, Cermet V155 Blade, Shoulder Bag, Allen Keys (2mm, 5mm)



PipeCut 360 AIR

Capacity Range 3" – 14" OD Pipes

Steel Wall Thickness 1.8"

Plastic Wall Thickness 1.8"

Motor 4.6 HP

Weight 59 lb

Required Air Pressure 90 PSI /140 CFM

Blades for Ductile Iron Diamond X165, Diamond X180

Standard Equipment: PipeCut 360 AIR SAW

BEVELERS

PipeBevel 220E

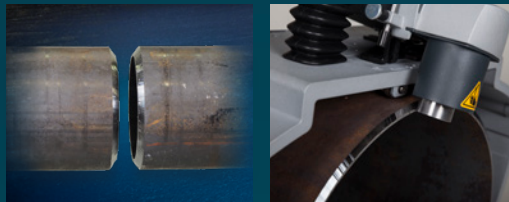
| | |
|----------------|--------------------|
| Capacity Range | 1" – 8.8" OD Pipes |
| Wall Thickness | .0" – 0.4" |
| Angles/Degrees | 30, 37.5, 45 |
| Motor | 8.4 Amp |
| Weight | 13 lb |

Standard Equipment: PipeBevel PB220E, Shoulder Bag, 2 Pipe Supports, Allen Key (5mm). NOTE: Cutting Head and Bevel Tips Sold Separately. Need to order Cutter Head Angle (30°, 37.5°, 45°) and order SS Bevel Tips (3 pack).

PipeBevel 360E

| | |
|----------------|-----------------------|
| Capacity Range | 4.4" – 14.4" OD Pipes |
| Wall Thickness | .0" – 0.4" |
| Angles/Degrees | 30, 37.5, 45 |
| Motor | 8.4 Amp |
| Weight | 13 lb |

Standard Equipment: PipeBevel PB360E, Shoulder Bag, 2 Pipe Supports, Allen Key (5mm). NOTE: Cutting Head and Bevel Tips Sold Separately. Need to order Cutter Head Angle (30°, 37.5°, 45°) and SS Bevel Tips (3 pack).



Pipe Supports, Shoulder Bag and Blade Guard



4 Pipe Supports



Heavy Duty Pipe Supports



Shoulder Bag



Blade Guard w/ Vacuum Port
BGTVP Small: 220 Pro
BGTVP Large: 280/360/460 Pro

SAW BLADES/DISCS – 2 7/16" ARBOR

| SKU | Material to Cut | Fit Saws# | Blade Size |
|-----------------------|--|---------------------------------------|------------------|
| TCT 140 | Steel, Copper, Plastics | 170E, 220E, & Pro Saws | 5 1/2" (140mm) |
| TCT 165 | Steel, Copper, Plastics | 280, 360, 460, 220 Pro | 6 1/2" (165mm) |
| TCT P-150 | Plastics (PE, PP, PVC, etc.) | P400, P400 Cordless, P1000 & Pro Saws | 5 29/32" (150mm) |
| TCT P-190 | Plastics (PE, PP, PVC, HDPE) | P1000, 280, 360, 460 | 7 1/2" (190mm) |
| TCT P-250 | Plastics (PE, PP, PVC, HDPE) | P1000 | 9 7/8" (250mm) |
| TCTZ-140 | Steel, Copper, Plastic | 170E, 220E, & Pro Saws | 5 1/2" (140 mm) |
| Cermet 130 | Steel, Stainless | 280, 360, Air Saw | 5 1/10" (130mm) |
| Cermet 140 | Steel, Stainless, Copper, Plastics | 170E, 220E, & Pro Saws | 5 1/2" (140mm) |
| Cermet 140 Thin | Steel, Copper, Plastic | 170 Cordless, & Pro Saws | 5 1/2" (140mm) |
| Cermet 165 | Steel, Stainless, Copper, Plastics | 280, 360, 460, 220 Pro | 6 1/2" (165mm) |
| Cermet 180 | Steel, Stainless, Copper | 280, 360, 460 | 7 2/25" (180mm) |
| Cermet V155 | Thin Wall Ventilation Pipes | V1000 | 6 7/64" (155mm) |
| Cut Bevel Blade 190 | Plastics (PE, PP, PVC, HDPE) | P1000 | 7 1/2" (190 mm) |
| Cut Bevel Blade | Plastics (PE, PP, PVC, HDPE) | P400, P400 Cordless, & P1000 | 5 53/64" (148mm) |
| ALU 140 | Aluminum, Fusible Plastic | 170E, 220E, & Pro Saws | 5 1/2" (140mm) |
| ALU 165 | Aluminum, Fusible Plastic | 220, 280, 360, 460 | 6 1/2" (165mm) |
| ALU 180 | Aluminum, Fusible Plastic | 220, 280, 360, 460 | 7 2/25" (180mm) |
| Diamond X140 | Cast Iron, Ductile (Nodular Cast Iron) | 170E, 220E, & Pro Saws | 5 1/2" (140mm) |
| Diamond X165 | Cast Iron, Ductile (Nodular Cast Iron) | 360 AIR & All Pro Saws | 6 1/2" (165mm) |
| Diamond X180 | Ductile Iron, Fiberglass | 360 AIR & All Pro Saws | 7 2/25" (180mm) |
| INOX 140 | Stainless Steel | 170E, 220E, INOX220 & All Pro Saws | 5 1/2" (140mm) |
| INOX 140 Thin | Schedule 10 Stainless | 170E, 220E, INOX220 & All Pro Saws | 5 1/2" (140mm) |
| Diamond Cut/Bevel 140 | Cut/Bevel Ductile/Cast Iron | 220 PRO CUT/BEVEL | 5 1/2" (140mm) |
| Diamond Cut/Bevel 165 | Cut/Bevel Ductile/Cast Iron | 360 PRO CUT/BEVEL | 6 1/2" (162mm) |

GUARANTEE WARRANTY

Guarantee Warranty terms effective January 1, 2020.

If the Exact PipeCut Saw becomes unusable due to material or manufacturing defects within the Warranty Term or *Extended Warranty Term, at our discretion, we will repair the Exact PipeCut Saw or supply an entirely new or factory reconditioned Exact PipeCut Saw at no charge.

Warranty Term

The Exact Tools Warranty Term is for 12 months from the date of purchase.

The Warranty is valid only if all of the following conditions are met:

1. Copy of a dated purchase receipt is returned to an Authorized Warranty Repair Center or has been uploaded to our website at the time of warranty registration.
2. The Exact PipeCut Saw has not been misused.
3. No attempt has been made to repair the saw by anyone other than technicians at an Authorized Warranty Repair Center.
4. The Exact PipeCut Saw has been used in accordance with the operating, safety, and servicing instructions provided in the manual.
5. The Exact PipeCut Saw has been delivered to an Authorized Warranty Repair Center within the term of the warranty.

Note: The Exact PipeCut Saw is to be shipped to the Authorized Warranty Repair Center freight prepaid. If the Exact PipeCut Saw is repaired under Warranty, the return shipment will be made freight prepaid. If the Exact PipeCut Saw is not repaired under Warranty, the return shipment will be made freight collect.

Please Note: The following items or services are excluded from Warranty claims:

Saw Blades, Overload Protection Fuse, Carbon Brushes, Gripping Unit Wheels, Blade Flange, Attachment Flange 90mm, Pulling Flange Washer, Normal Wear and Tear, Power Cords, Adjustment of Adjustment Wheel, Damage due to: misuse, accident, water, fire or physical damage.

exact

Pipe Cutting System

www.exacttools.com

Exact Pipe Tools, Inc.

A Wholly Owned Subsidiary of Exact Tools, OY

3465 S. Arlington Road,
Suite E #312 • Akron OH 44312

Email: nasales@exacttools.com

Ph: 844.392.2800

Ph: 330.922.8150

Fx: 888.607.9648



WATCH OUR
DEMONSTRATION



VISIT OUR WEBSITE
EXACTTOOLS.COM