



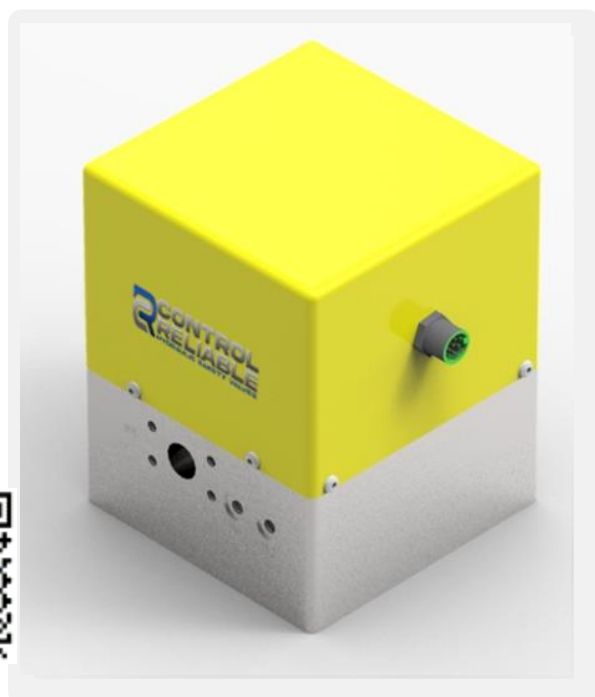
CONTROL RELIABLE

HYDRAULIC SAFETY VALVES

CRBL-16 Specification Sheet

Control Reliable's Blocking Valve functions as a two position 2-way hydraulic valve with redundant valving elements and redundant monitoring.

- ◇ The purpose of the valve is to block flow in a hydraulic system.
- ◇ A common application is to block flow in a hydraulic cylinder to inhibit cylinder movement caused by gravity.
- ◇ Safety Rated Monitoring Switches indicate the movement of the redundant valving elements. Operation of the Safety Rated Monitoring Switches is typically monitored by a Safety Relay or a Safety PLC supplied by others.



Control Reliable Hydraulic Safety Valves are TUV Certified!



SIL/PL Capability
www.tuv.com
ID 0600000000

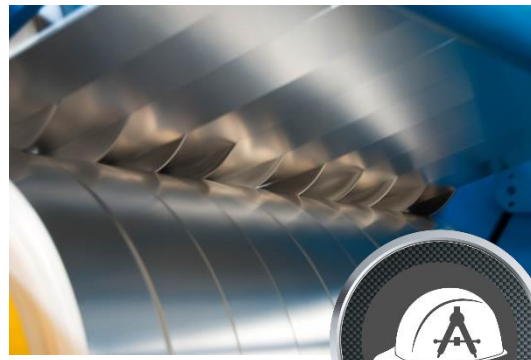


Scan Code above to View TUV certification Details

Specifications

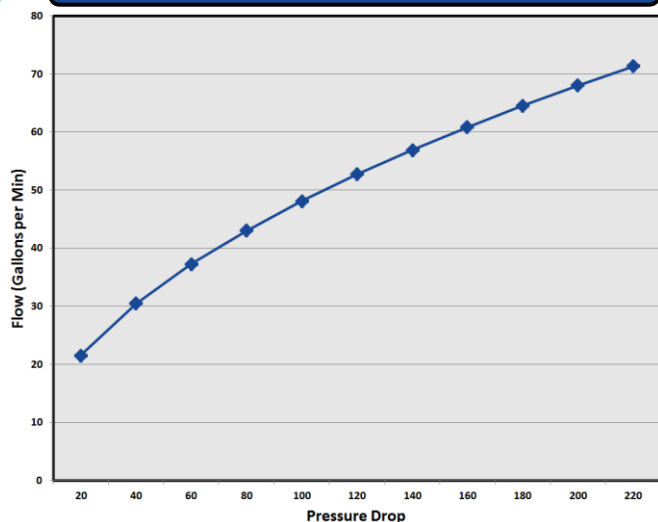
Maximum Rated Pressure	Steel: 5000PSI / Aluminum: 3000PSI
Minimum Operating Voltage	85% of Rated Voltage at 72F
Amps Draw	24VDC-2.35Amps / 115VAC-0.52Amps
Duty Cycle	Continuous at 100% Voltage
Response Time	.070 - .142 seconds at 1000PSI
Operating Temperature	-50F to +200F
Fluid Compatibility	Mineral Based or Synthetic Fluids
Recommended Viscosity	45 to 2000 SSU (6 to 420 cST)
Filtration	ISO Code 18/16/13 or better
Approximate Weight	Ductile - 180 pounds Aluminum - 75 pounds
Mounting Orientation	Any

Contact us for Additional Assistance!

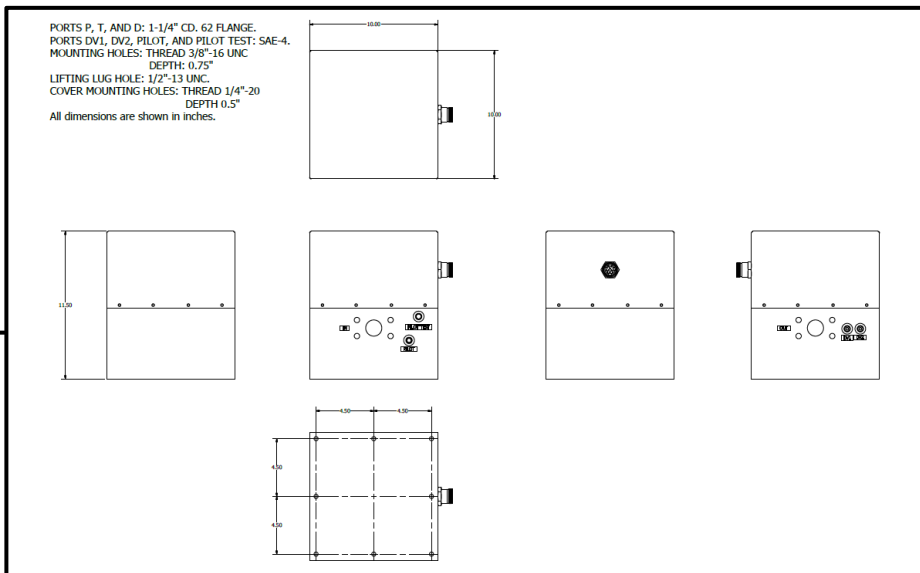
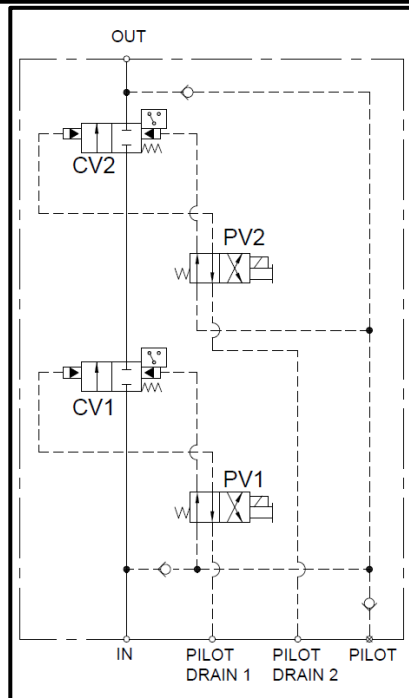


CRBL-16 Specification Sheet

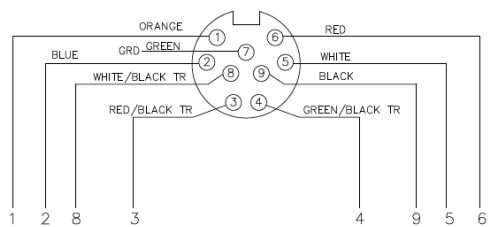
Flow/Performance Curve



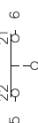
Simplified CRBL Circuit



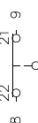
Drawings



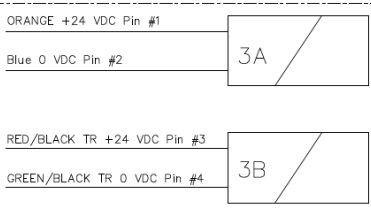
SWITCH
SAFETY
CV1



SWITCH
SAFETY
CV2



○ GRD



PILOT VALVES

**CONTROL
RELIABLE**
HYDRAULIC SAFETY VALVES

Click below to download CAD files

