



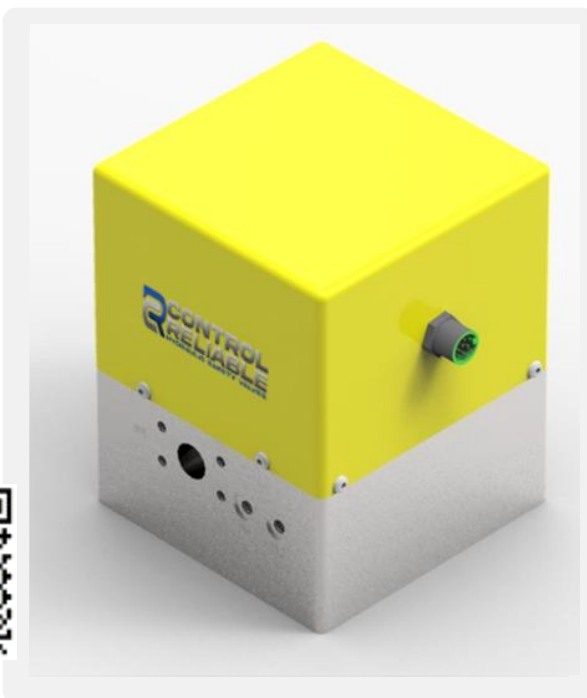
# CONTROL RELIABLE

## HYDRAULIC SAFETY VALVES


### CRBL-25 Specification Sheet

Control Reliable's Blocking Valve functions as a two position 2-way hydraulic valve with redundant valving elements and redundant monitoring.

- ◇ The purpose of the valve is to block flow in a hydraulic system.
- ◇ A common application is to block flow in a hydraulic cylinder to inhibit cylinder movement caused by gravity.
- ◇ Safety Rated Monitoring Switches indicate the movement of the redundant valving elements. Operation of the Safety Rated Monitoring Switches is typically monitored by a Safety Relay or a Safety PLC supplied by others.



Control Reliable Hydraulic Safety Valves are TUV Certified!



SIL/PL Capability



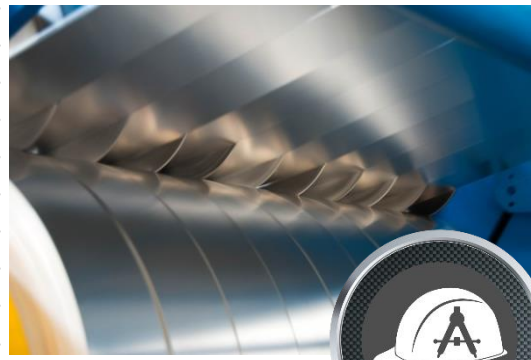
www.tuv.com  
ID 060000000

Scan Code above to View TUV certification Details

### Specifications

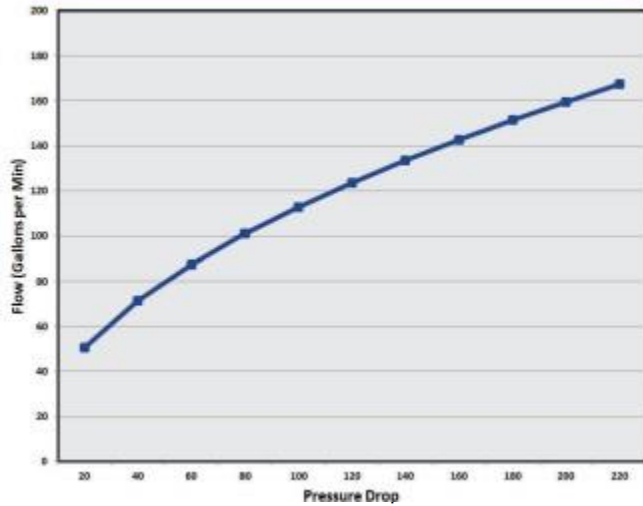
Maximum Rated Pressure	Steel: 5000PSI / Aluminum: 3000PSI
Minimum Operating Voltage	85% of Rated Voltage at 72F
Amps Draw	24VDC-2.35Amps / 115VAC-0.52Amps
Duty Cycle	Continuous at 100% Voltage
Response Time	.070 - .130 seconds at 1000PSI
Operating Temperature	-50F to +200F
Fluid Compatibility	Mineral Based or Synthetic Fluids
Recommended Viscosity	45 to 2000 SSU (6 to 420 cST)
Filtration	ISO Code 18/16/13 or better
Approximate Weight	Ductile - 160 pounds Aluminum - 70 pounds
Mounting Orientation	Any

Contact us for Additional Assistance!

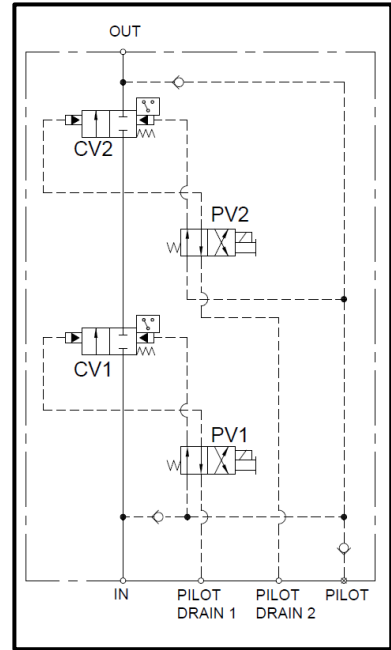


# CRBL-25 Specification Sheet

## Flow/Performance Curve

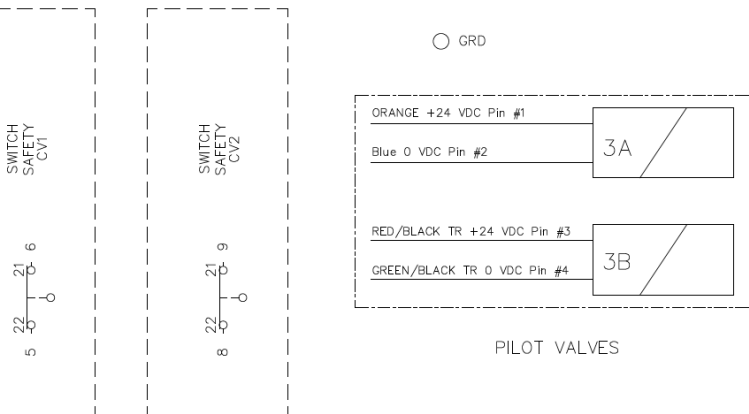
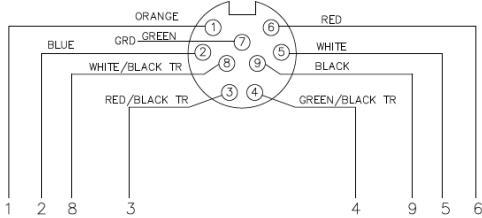
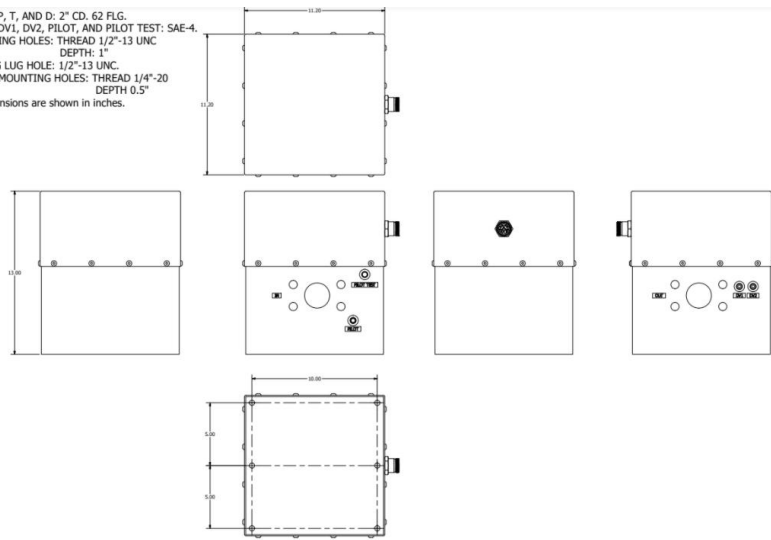


## Simplified CRBL Circuit



## Drawings

PORTS P, T, AND D: 2" CD, 62 FLG.  
 PORTS DV1, DV2, PILOT, AND PILOT TEST: SAE-4.  
 MOUNTING HOLES: THREAD 1/2"-13 UNC  
 DEPTH: 1"  
 LIFTING LUG HOLE: 1/2"-13 UNC.  
 COVER MOUNTING HOLES: THREAD 1/4"-20  
 DEPTH 0.5"  
 All dimensions are shown in inches.



**CONTROL RELIABLE**  
 HYDRAULIC SAFETY VALVES

Click below to download CAD files

