

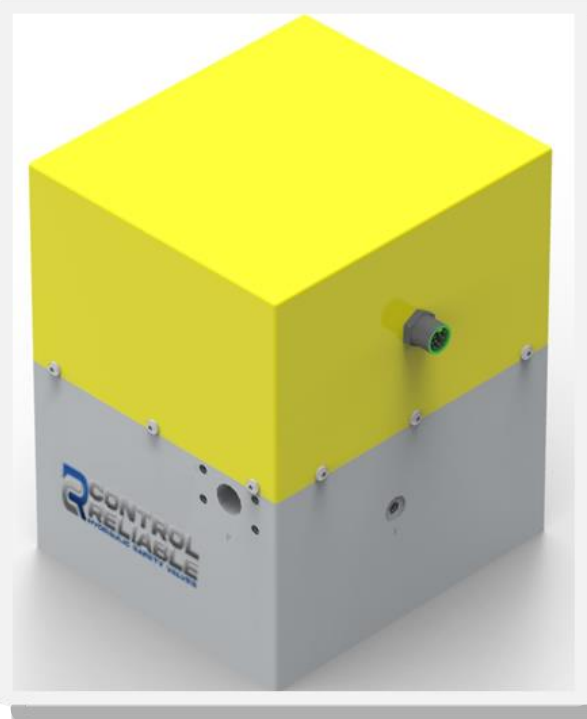


CONTROL RELIABLE HYDRAULIC SAFETY VALVES

CREI-25 Specification Sheet

Control Reliable's Energy Isolation Valve functions as a two position 3-way hydraulic valve with redundant valving elements and redundant monitoring. The purpose of the valve is to, when energized, provide a flow path for a flow of hydraulic fluid from its source to the hydraulic system. When de-energized, the valve blocks flow from the hydraulic energy source and vents the hydraulic system to tank.

- ◇ The valve's hydraulic circuitry features a series flow condition from the inlet of the valve through redundant valving elements to the discharge of the valve.
- ◇ The hydraulic circuitry also features a parallel flow condition from the discharge of the valve through either or both of the valving elements to the tank port. This configuration assures that if a valving element fails to operate as requested, inlet flow will be blocked and fluid from the outlet side of the valve is directed to tank.
- ◇ Safety Rated Monitoring Switches indicate the movement of the redundant valving elements. Operation of the Safety Rated Monitoring Switches is typically monitored by a Safety Relay or a Safety PLC supplied by others.



Contact us for Additional Assistance!

Specifications

Maximum Rated Pressure	Steel: 5000PSI / Aluminum: 3000PSI
Minimum Operating Voltage	85% of Rated Voltage at 72F
Amps Draw	24VDC-2.35Amps / 115VAC-0.52Amps
Duty Cycle	Continuous at 100% Voltage
Response Time	.070 - .136 seconds at 1000PSI
Operating Temperature	-50F to +200F
Fluid Compatibility	Mineral Based or Synthetic Fluids
Recommended Viscosity	45 to 2000 SSU (6 to 420 cST)
Filtration	ISO Code 18/16/13 or better
Approximate Weight	Ductile - 260 pounds Aluminum - 105 pounds
Mounting Orientation	Any

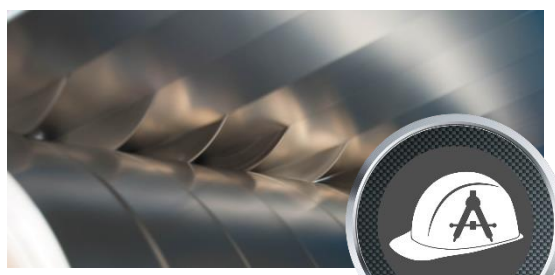
Control Reliable Hydraulic Safety Valves are TUV Certified!



SIL/PL Capability
www.tuv.com
ID 0600000000

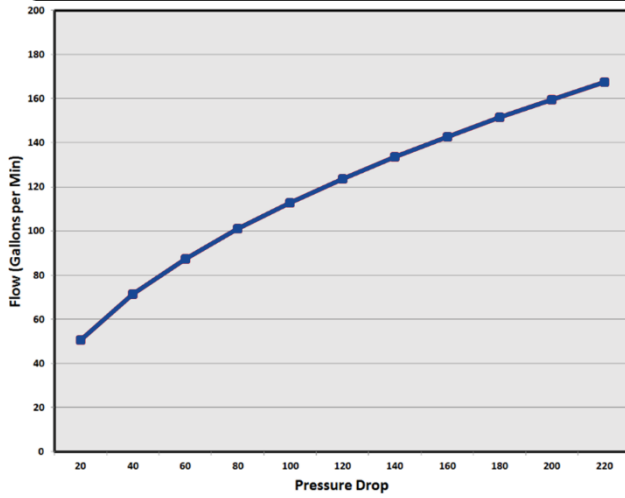


Scan Code above to View TUV certification Details

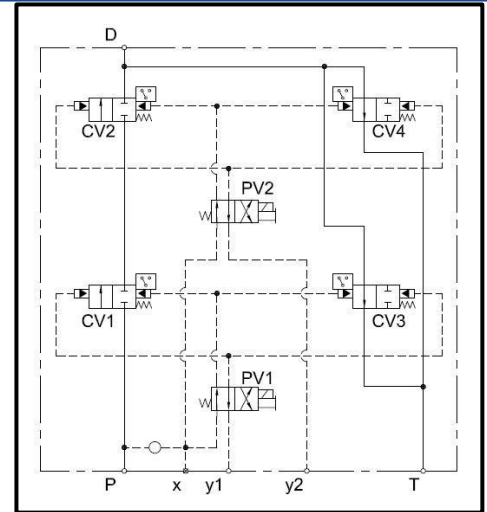


CREI-25 Specification Sheet

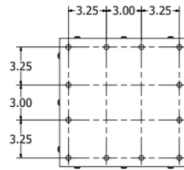
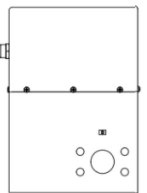
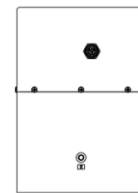
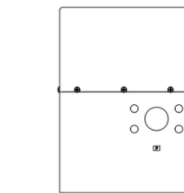
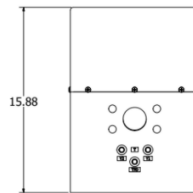
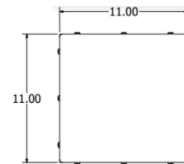
Flow/Performance Curve



Simplified CREI Circuit

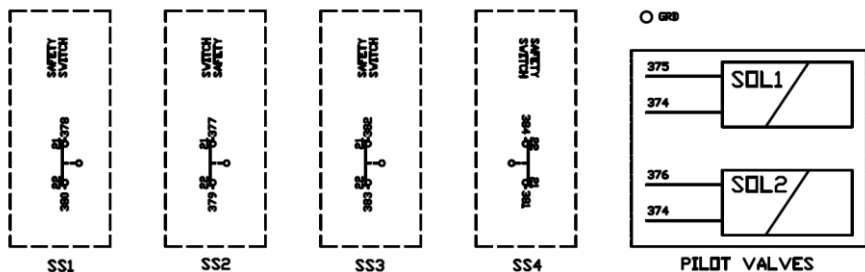
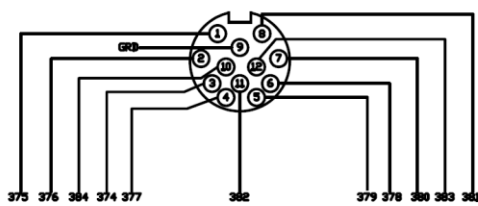


PORTS P, T, AND D: 2" CD. 62 FLANGE.
 PORTS X, Y1, Y2, AND TPD: SAE-4.
 MOUNTING HOLES: THREAD 1/3"-13 UNC
 DEPTH: .1"
 LIFTING LUG HOLE: 5/8"-11 UNC.
 COVER MOUNTING HOLES: THREAD 1/4"-20
 DEPTH 0.5"
 All Dimensions are shown in inches.



Drawings

CONNECTION DIAGRAM



Click below to download CAD files

