



EXOTIC

AUTOMATION & SUPPLY

Drive Controlled Pump Solutions

Exotic's Drive Controlled Pump (DCP) solutions, utilizing Parker components, optimize hydraulic powered machinery and equipment. This DCP technology allows hydraulic powered machinery to operate more efficiently, quietly, and cooler. The key is optimizing the electric motors operating speed and torque to produce only the pressure and flow that is required to complete the machine's operating cycle.



Benefits Over Traditional Power Units

- ◆ Reduced Energy Consumption
- ◆ Lower Noise Emissions
- ◆ Reduced Machine Footprint
- ◆ Smaller Reservoir
- ◆ Increased Machine Uptime
- ◆ Reduced HP Requirements
- ◆ Potential Hydraulic Circuit Simplification



www.exoticautomation.com

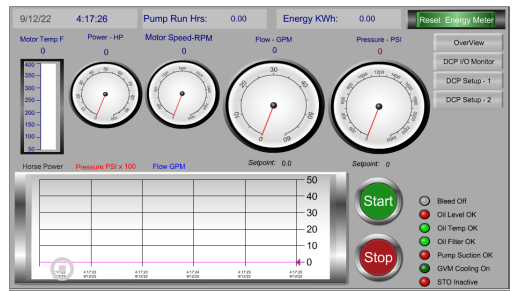
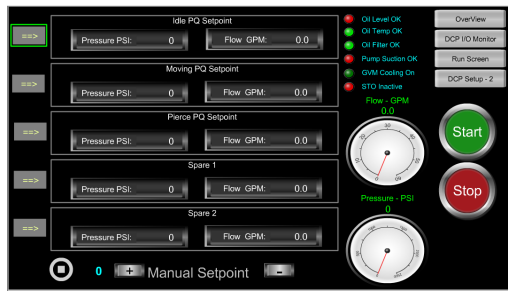


Drive Controlled Pump Solutions



Specifications

Drive	Parker AC30 Series
Motor	Parker GVM Series with Resolver
Gear Pump	3.88 Cu. In. Helical
Nominal Power	Up to 40 HP
Max Flow	42 GPM
Nominal Pressure	1,800 PSI (Up To 2,300 PSI Overpressure for 3 Seconds)
Dimensions	Height: 48" Width: 48" Depth: 68" Dry Weight: 1,000 lbs.
Adjustable Setpoints	Programable & Manual Pressure/Flow Inputs
Rated Input Voltage	3-Phase 380 - 460 Vac ±10%
PLC Communication	Modbus IP Over Ethernet
Real-Time Feedback	HP, Flow & Pressure



Applications

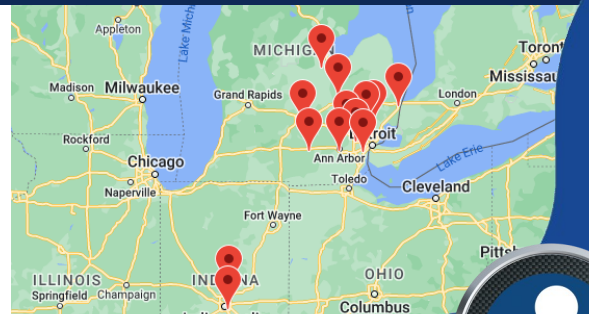
- ◆ Open Loop
- ◆ Closed Loop
- ◆ Clamping
- ◆ Load Handling
- ◆ Piercing
- ◆ Metal Forming



Let us show you how you can reduce energy consumption while maintaining high power density and precise control in your hydraulic system.



53500 Grand River Ave
 New Hudson, MI 48165
 (248) 477-2122
 sales@erpc.com
13 Locations!



www.exoticautomation.com

