

EXOTIC

AUTOMATION & SUPPLY

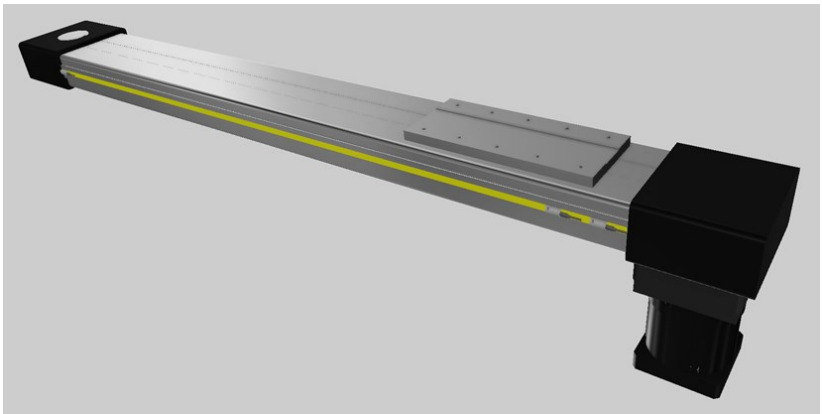
Multi-Position Actuator

Problem

A bottle manufacturer was using multiple pneumatic actuators for different diverter gate stops. The pneumatics were sometime slow to react causing incorrect gate position.

Solution

Exotic worked with the customer to properly size an OSPE belt driven linear actuator. The use of the belt drive actuator allowed the customer to move the diverter gate at high speeds and multiple positions using only one actuator. The standard unit was customized with food grade grease and a custom motor mount to allow them to use motors and drive that were already being used elsewhere in the plant, requiring no additional motor and drive spare parts added to their inventory.



Success Factors	Customer Value
Exotic was able to offer a simplified solution that was customized specifically to the customers application requirements.	Simplified solution resolved the customers issue and did not require adding any additional spare parts to their inventory.

Featured Products

OSPE50BHD - with food grade grease and custom motor mount. With an integrated square rail for high level dynamic positioning, the OSPE50BHD offers numerous levels of configurability making it a highly flexible product.