



EXOTIC

AUTOMATION & SUPPLY



HELPFUL PARKER CONFIGURATOR RESOURCES



P1F CONFIGURATOR

ISO 15552 Pneumatic Cylinders, Smooth Profile Design

[CLICK TO ACCESS THE P1F CONFIGURATOR](#)



P1P CONFIGURATOR

Compact ISO 21287 Pneumatic Cylinders

[CLICK TO ACCESS THE P1P CONFIGURATOR](#)



P1D CONFIGURATOR

ISO 15552 / VDMA Magnetic Profile and Rod-Tie Cylinders

[CLICK TO ACCESS THE P1D CONFIGURATOR](#)



PTR CONFIGURATOR

Pneumatic Rotary Actuator

[CLICK TO ACCESS THE PTR CONFIGURATOR](#)



2A, 2AN, 2AJ, 2ANJ CONFIGURATOR

Heavy Duty Steel Pneumatic Cylinders

[CLICK TO ACCESS THE 2A, 2AN, 2AJ & 2ANJ CONFIGURATOR](#)



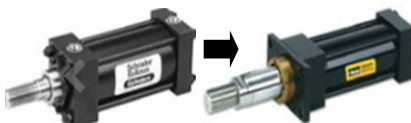
HP CONFIGURATOR

Large Bore Rack and Pinion

[CLICK TO ACCESS THE HP CONFIGURATOR](#)

SCHRADER NC9 TO PARKER 2AN CONFIGURATOR

[CLICK TO ACCESS THE NC9 CONFIGURATOR](#)



Need Assistance?
Contact us for help
anytime!

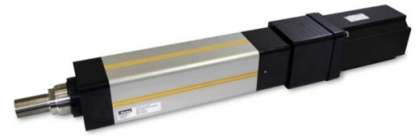
PARKER HELPFUL CONFIGURATOR RESOURCES:



OSPP CONFIGURATOR

Rodless Pneumatic Cylinders

[CLICK TO ACCESS THE OSPP
CONFIGURATOR](#)



ETH CONFIGURATOR

Electric Cylinders

[CLICK TO ACCESS THE ETH
CONFIGURATOR](#)



PCH PORTAL CONFIGURATOR

Decentralized Inputs / Outputs and IO Link Master

[CLICK TO ACCESS THE PCH
PORTAL CONFIGURATOR](#)



CYLINDER CENTRAL

[CLICK TO ACCESS CYLINDER
CENTRAL](#)



H SERIES CONFIGURATOR

ISO 599 and 15407 Pneumatic Valves Sizes 02, 01, 1, 2 and 3

[CLICK TO ACCESS THE H SERIES
CONFIGURATOR](#)



PARKER ACTUATOR LEAD TIME REDUCTION PROGRAMS

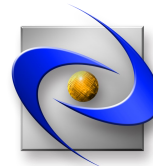
[CLICK TO ACCESS THE LEAD TIME
REDUCTION PROGRAM](#)



PNEUMATIC & ELECTROMECHANICAL DESIGN TOOL

[CLICK TO ACCESS
VIRTUAL ENGINEER](#)

Contact us Today!



EXOTIC
AUTOMATION & SUPPLY

53500 Grand River Ave.

New Hudson, MI 48165

(248) 477-2122

sales@erpc.com

12 Locations!

www.exoticautomation.com

