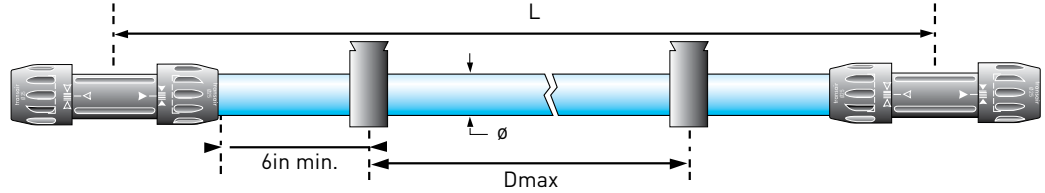


# Pipe Hangers

## Pipe Hangers for 1/2" to 2-1/2" Transair Aluminum Pipe

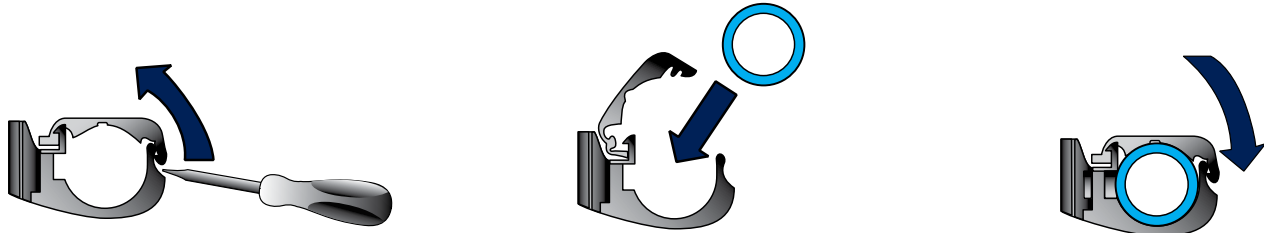


The Transair pipe hanger allows for the expansion and contraction of the pipe to freely occur.

To ensure a stable piping system, Parker Transair suggests the use of at least 2 hangers per pipe. Transair aluminum pipe should only be mounted using genuine Transair pipe hangers.

Ø (IN)	Ø (MM)	PIPE LENGTH (FT)	DMAX (FT)
1/2	16.5	9	8
1/2	16.5	15	10
1	25	9	8
1	25	20	10
1-1/2	40	9	8
1-1/2	40	20	13
2	50	10	8
2	50	20	13
2-1/2	63	10	8
2-1/2	63	20	13

## 1/2" to 2-1/2" Pipe Hanger Installation Process



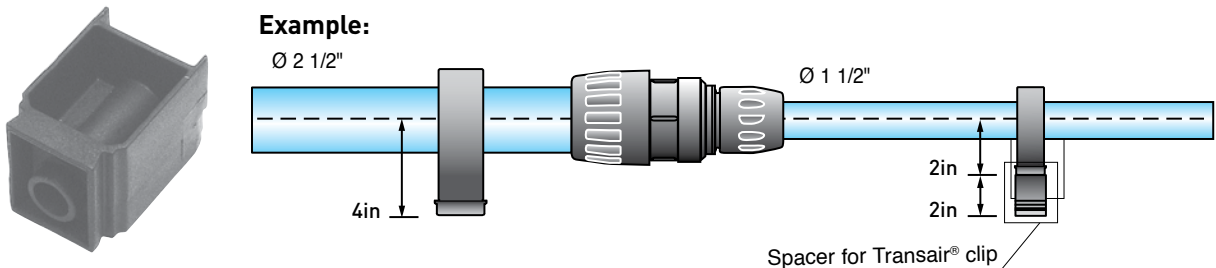
1. Install the pipe hanger where required and open using a screwdriver
2. Insert the pipe into the pipe hanger
3. Close the pipe hanger

## Pipe Hanger Quick Facts

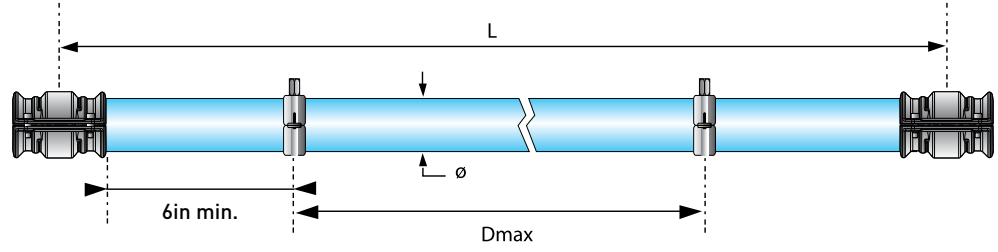
- Transair pipe hangers are installed / suspended using 3/8" threaded rod.
- 1/2" to 1-1/2" pipe hangers have a 1/4" female thread
- 2" & 2-1/2" pipe hangers have a 3/8" female thread
- For 1/2" to 1-1/2" hangers, Transair provides an adapter to convert the 1/4" threads to 3/8".

## Spacer

The Transair 6697 00 03 spacer is used for fitting a run of Transair using different diameters without introducing a bend.



**Pipe Hangers for 3" to 6" Transair Aluminum Pipe**

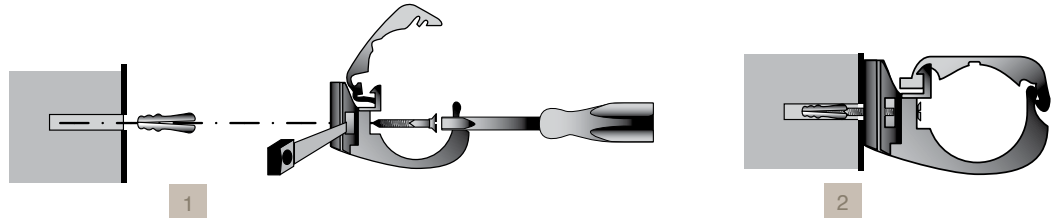


To ensure a stable piping system, Parker Transair suggests the use of at least 2 hangers per pipe. Transair aluminum pipe should only be mounted using genuine Transair pipe hangers.

$\varnothing$ (IN)	$\varnothing$ (MM)	PIPE LENGTH (FT)	D <sub>MAX</sub> (FT)
3	76	20	16
4	101	20	16
6	168	20	16

## Supporting a Transair® system

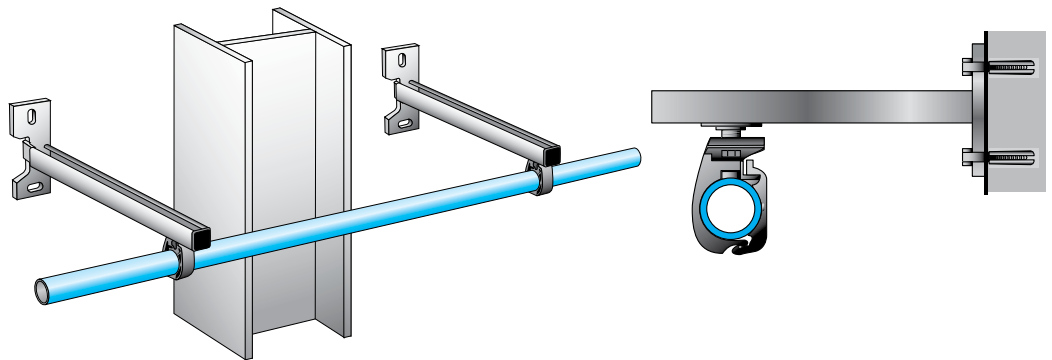
### Directly onto a wall



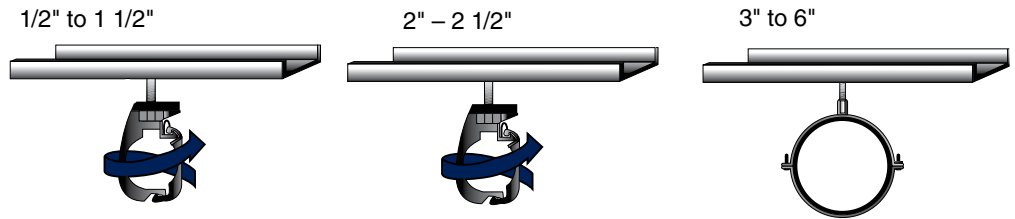
### Offset from a wall

1. Remove the nut at the base of the pipe hanger. Using a screwdriver, insert the screw through the hanger and into the wall. If the hanger does not fall on a stud, use a wall anchor to secure the hanger.
2. Tighten the screw

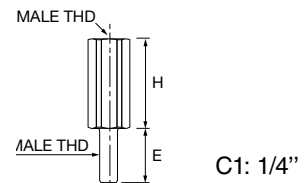
### U-channel type mounting bracket



U-channel assemblies are used to offset systems and to bypass obstacles.



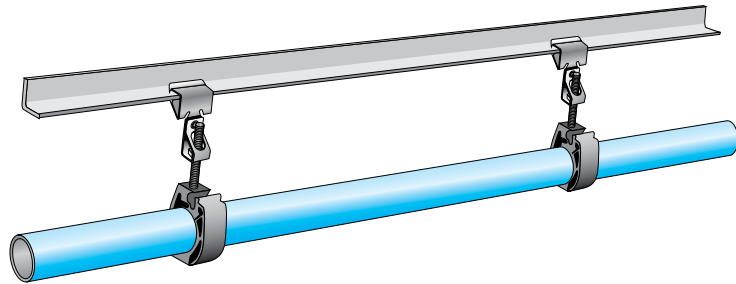
### Threaded rod adapter



The Transair® threaded rod adaptor allows 1/2", 1" and 1 1/2" Transair® pipe clips to be easily suspended under 3/8" threaded rod.

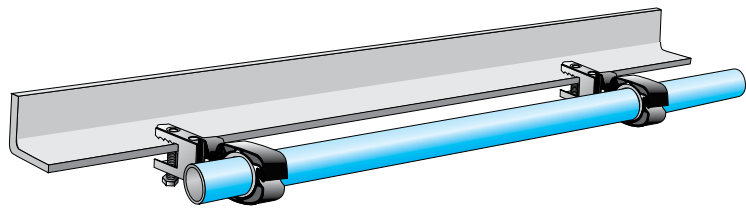
## Supporting a Transair® system

On a metal beam



Push-on type beam clamps

Using beam clamps\*



Screw type beam clamps

\*Beam clamps are not available for purchase through Parker Hannifin

