



---

# EQUIPMENT SOLUTIONS

For cutting, crimping, and cleaning hose assemblies.



# EQUIPMENT SOLUTIONS

## every step of the way.

With the largest selection of hose, and more fitting sizes and configurations than any other manufacturer, Parker has exactly what you need. Parker also delivers exceptional quality and reliability when it comes to equipment and tooling. Factory-quality hose assemblies can be quickly, easily, and cost effectively manufactured with Parker's industry leading equipment. Parker's Parkrimp system provides users with several key advantages:

- Perfect alignment: Our exclusive Parkalign system positions the fitting in the die for a perfect crimp every time.
- Efficient design: Bottom loading crimpers make it easier for operators to manage long hose lengths.
- Color-coded linked dies: Our linked dies are color-coded by size for easy identification.
- Durability: Parkrimp crimpers have been designed and manufactured to provide years of reliable service.



A complete line of equipment and tooling from hose saws, to push-on stands, to crimpers, to cleaning and capping systems are available to help you every step of the way while fabricating hose assemblies.

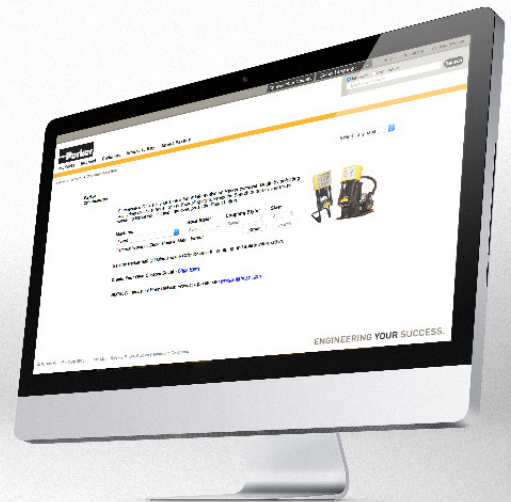
## LET PARKER HELP YOU

### select the appropriate materials and tooling.

CrimpSource is Parker's exclusive online software application that supplies you with the necessary crimp specifications in order to adhere to our strict safety standards. It is the industry's most complete resource for crimper technical information. It provides easy access to all the specifications necessary to correctly fabricate a factory-quality hose assembly.

With a series of dropdown menus, users are able to choose a crimper, the type of hose, and compatible fittings. Once the crimper is selected, the user is provided with crimp specs, crimper die recommendations, technical manuals, and crimper decals available for immediate printing.

For complete product information on all of Parker's crimpers, please visit:  
[www.parker.com/crimpsource](http://www.parker.com/crimpsource)



# HOSE ASSEMBLIES

## begin with cutting the necessary length of hose.

Parker has a multiple hose cut-off machines that offer industry leading performance. They are engineered to cut single and multiple wire reinforced hose easily and efficiently. Our cut-off machines are easy to operate and assure clean, square hose cuts. These machines require very little work space due to their compact design. We offer five different cut-off machines in order to deliver what you need for your fabrication requirements.

### Part No. 86C-110V



- Cuts multi-braided wire reinforced hose including 4-wire spiral up to 1½" I.D.
- 7" scalloped cutting blade
- 110V, single phase motor
- Portable saw for cutting on the job with universal clamp attachment
- Comes with a vacuum port to remove smoke and debris while cutting

### Part No. 86C-220V/86C-220V3



- Cuts wire reinforced hoses including 6 heavy wire constructions up to 2" I.D.
- 10" scalloped cutting blade
- Model 86C-220V, single phase motor; Model 86C-220V3, three phase motor
- Comes with a vacuum port to remove smoke and debris while cutting

### Part No. TH3-EM3-110V



- Cuts wire reinforced hoses including 6 heavy spiral constructions up to 1 1/4" I.D.
- Comes standard with a diamond-coated cutting blade
- Hose cut-off machine with 110V, single phase motor
- Comes with a vacuum port to remove smoke and debris while cutting

## ONCE THE HOSE HAS BEEN CUT AND FITTINGS HAVE BEEN SELECTED, it's time to attach them.

In order to make a proper hose assembly, hoses must be pushed completely onto the fitting. If the hose is not inserted into the shell of the fitting per the recommended length, the fitting can blow off, making for extremely dangerous situations. Hose insertion depth blocks are a way to quickly and easily mark proper hose insertion depth for guaranteed validity each and every time and reducing the risk of failure.

In addition to hose insertion blocks, Parker offers a fitting push-on stand which quickly and easily pushes fittings onto the hose, in order to boost productivity and quality of hose assemblies. This stand eliminates the need for rubber mallets, and oils to get fittings onto the end of the hose, and can be used for crimped fittings as well as field attachable fittings.



**WARNING:** This product can expose you to chemicals LEAD, which is known to the state of California to cause cancer and birth defects or other reproductive harm. For more information go to [p65.warnings.ca.gov](http://p65.warnings.ca.gov)

# WITH FITTINGS PROPERLY ATTACHED, crimping is simple.



## Karrykrimp & Karrykrimp Bench Mount

Parker's Karrykrimp modular design comes in both bench mount and portable styles. This gives users the flexibility of a portable crimper with the advantages of increased productivity when connected to the stationary power unit. The increased height allows the operator to easily crimp long, bent tube fittings.

- Compatible with 2-wire braided hoses up to 1-1/4" I.D. and 4-wire spiral hoses up to 5/8" I.D.
- Pivoting pusher design for easy die change out
- For use with 25, 26, 43, 81, and HY series steel fittings

Part Number			Description	Individual Part Number
82C-CHD	82C-061L	82C-KKB		
■	■	■	Crimp head	82C-CHD
		■	Bench power unit assembly	85C-ZMS
■	■	■	Silver die ring	82C-R01
■	■	■	Black die ring	82C-R02
	■		Hose assembly	85C-00L
	■		Stand assembly	85C-STD
		■	Hose assembly	85C-03L

Optional Tooling: Die Kit 43K-KDA (Includes 43 Series dies in sizes 1/4", 3/8", 1/2", 3/4", 1", and 1-1/4")



**WARNING:** This product can expose you to chemicals LEAD, which is known to the state of California to cause cancer and birth defects or other reproductive harm. For more information go to [p65.warnings.ca.gov](http://p65.warnings.ca.gov)



## Karrykrimp 2 & Karrykrimp 2 Bench Mount

The Karrykrimp 2 is a portable or bench mount, compact and ruggedly built crimper that is an economic alternative for the self-assembly of Parker's hose and fittings. Parker's Karrykrimp 2 models can easily crimp Parkrimp style straight or bent-stem stainless and stainless steel fittings up to 1-1/4" in diameter including 25, 26, 43, 70, 71, 73, 77, 78, 81 and HY series.

- Compatible with 2-wire braided hoses up to 1-1/4" I.D., 4-wire spiral hose up to 1-1/4" I.D., and 6-wire spiral hose up to 1" I.D.
- Pivoting pusher design for easy die change out
- For use with 25, 26, 43, 70, 71, 73, 77, 78, 81 and HY series fittings

Part Number			Description	Individual Part Number
85C-CHD	85C-061L	85C-KKB		
■	■	■	Crimp head	85C-CHD
		■	Bench power unit assembly	85C-ZMS
■	■	■	Silver die ring	85C-R01
■	■	■	Black die ring	85C-R02
	■		Hose assembly	85C-00L
	■		Stand assembly	85C-STD
		■	Hose assembly	85C-03L

Optional Tooling: Die Kit KK2-KDA (Includes 43 Series dies in sizes 1/4", 3/8", 1/2", 3/4", 1", 1-1/4" and 77 Series dies in sizes 1/2", 5/8", 3/4", and 1" only)



**WARNING:** This product can expose you to chemicals LEAD, which is known to the state of California to cause cancer and birth defects or other reproductive harm. For more information go to [p65.warnings.ca.gov](http://p65.warnings.ca.gov)

## Phastkrimp 2

The Phastkrimp 2 is a bench mount, ruggedly built crimper that is an economic alternative for the self-assembly of Parker's hose and fittings. Parker's Phastkrimp 2 models can easily crimp straight or bent-stem steel and stainless steel fittings.



- Compatible with 1 and 2-wire braided hoses up to 1-1/4" I.D. and 4-wire spiral hoses up to 1-1/4" I.D.
- For use with 25, 26, 43, 77, 81, and HY series steel fittings

Part Number		Description	Individual Part Number
89CR-061	89CR-062		
■	■	Crimp head	89CR-CHD
■		Phastkrimp 2 230V, 3 phase, 60 HZ	89CR-HPS-3P
	■	Phastkrimp 2 230V, 1 phase, 60 HZ	89CR-HPS-1P
■	■	Silver die ring	85C-R01
■	■	Black die ring	85C-R02

Optional Tooling: Die Kit KK2-KDA (Includes 43 Series dies in sizes 1/4", 3/8", 1/2", 3/4", 1", 1-1/4" and 77 Series dies in 1/2", 5/8", 3/4", and 1" only)



**WARNING:** This product can expose you to chemicals LEAD, which is known to the state of California to cause cancer and birth defects or other reproductive harm. For more information go to [p65.warnings.ca.gov](http://p65.warnings.ca.gov)

## Parkrimp 1

Parker's Parkrimp 1 all in one crimper and power unit design was engineered for optimal reliability, consistency, and durability. With a compact bench mount design. The increased height enables longer bent tube fittings to be crimped with Parker's with 25, 26, 43, 81, and HY Series Parkrimp fittings.



- Crimp cycle: C15-20 seconds, depending on Pusher position. (1/2" 43 series straight fittings)

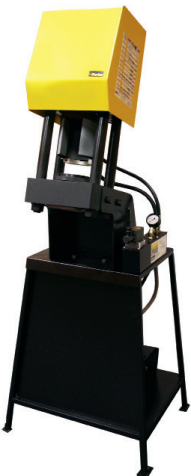
Part Number		Description	Individual Part Number
80C-061			
■		Parkrimp 1 crimper with 115/230 volt, 1 phase, 60 Hz power unit wired for 115V	80C-181
■		Silver die ring	80C-R01
■		Black die ring	80C-R02



**WARNING:** This product can expose you to chemicals LEAD, which is known to the state of California to cause cancer and birth defects or other reproductive harm. For more information go to [p65.warnings.ca.gov](http://p65.warnings.ca.gov)

## Parkrimp 2

The Parkrimp 2 is Parker's largest and most versatile crimper that comes in either single phase or three phase electric. Parker's Parkrimp 2 models can crimp straight or bent-stem steel and stainless steel fittings from 1/4" to 2" in diameter including 25, 26, 43, 70, 71, 73, 76, 77\*, 78, 79, 81, S6, and HY series.



- Compatible with 2-wire braided hose up to 2" I.D., and 4- and 6-wire spiral hose up to 2" I.D.
- Crimps both steel and stainless steel fittings
- For use with 25, 26, 43, 70, 71, 73, 76, 77\*, 78, 79, 81 S6, and HY series fittings

Part Number		Description	Individual Part Number
83C-081	83C-082		
■	■	Parkrimp 2 crimper head assembly	83C-080
■		Parkrimp 2 stand assembly with 230/460 volt, 3 phase, 50/60 Hz power unit (wired for 230 volt)	83C-S40
	■	Parkrimp 2 stand assembly with 230 volt, 1 phase, 50/60 Hz power unit	83C-S20
■	■	Adapter bowl	83C-OCB
■	■	Spacer ring	83C-R02
■	■	Spacer plate	83C-R02H

\*Can crimp 77 series stainless steel fittings up to 1-1/2"

Optional Tooling: Die Kit PK2-KDA (Includes 43 Series dies in sizes 1/4", 3/8", 1/2", 3/4", 1", 1-1/4" and 77 Series dies in sizes 1/2", 5/8", 3/4", 1", 1-1/4", 1-1/2", and 2" only) or Die Kit 77K-KDA (includes 77 Series dies in sizes 1/2", 5/8", 1", 1-1/4", 1-1/2", and 2" only)



**WARNING:** This product can expose you to chemicals LEAD, which is known to the state of California to cause cancer and birth defects or other reproductive harm. For more information go to [p65.warnings.ca.gov](http://p65.warnings.ca.gov)

# A PRODUCTION CRIMPER, for high volume hose assembly production.



## Production Crimper

The TH8-380 sets a new standard for high quality and cost effective production crimpers. The electronic controls come pre-loaded with Parker hose part numbers and crimp specifications to make hose selection quick and easy. Furthermore, the greaseless die design of the TH8-380 requires less maintenance and provides a cleaner work environment due to the revolutionary slide bearing technology.

- Compatible with 2-wire braided hose up to 3" I.D., 4- and 6-wire spiral hose up to 3" I.D., and up to 4" industrial hoses
- Greaseless die design

Part Number	Description	Length	Width	Height	Weight	Crimp Force	Hydraulic Fluid	Power Source
TH8-380	Production Crimper	47"	24.5"	67"	1653 lbs	340 tons	ISO-Grade AW46	230-480 volt, 3 phase, 50/60 Hz



**WARNING:** This product can expose you to chemicals LEAD, which is known to the state of California to cause cancer and birth defects or other reproductive harm. For more information go to [p65.warnings.ca.gov](http://p65.warnings.ca.gov)

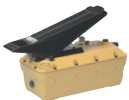
# POWER PORTABLE PUMPS the way you want.



Part Number	Description	Length	Width	Height	Port Size	Weight	Hydraulic Fluid
82C-OHP	Hand Pump	23"	4"	5"	3/8" NPTF	9 lbs	Enerpac Oil



Part Number	Description	Length	Width	Height	Port Size	Weight	Hydraulic Fluid	Power Source
82C-OEP	Electric Pump	13"	13"	15"	3/8" NPTF	31 lbs	Enerpac Oil	115 volt, 1 phase, 50/60 Hz, 9 amp



Part Number	Description	Length	Width	Height	Intake Port Size	Outtake Port Size	Weight	Hydraulic Fluid
82C-OAP	Air / Hydraulic Pump	15"	6"	6"	1/4" NPTF	3/8" NPTF	31 lbs	Enerpac Oil



Part Number	Description	Length	Width	Height	Port Size	Weight	Hydraulic Fluid
85C-OHP	Hand Pump	29"	13"	11"	3/8" NPTF	61 lbs	Enerpac Oil



Part Number	Description	Length	Width	Height	Port Size	Weight	Hydraulic Fluid	Power Source
85C-OEP	Electric Pump	19"	11"	17"	3/8" NPTF	50 lbs	Enerpac Oil	115 volt, 1 phase, 50/60 Hz, 20 amp



**WARNING:** This product can expose you to chemicals LEAD, which is known to the state of California to cause cancer and birth defects or other reproductive harm. For more information go to [p65.warnings.ca.gov](http://p65.warnings.ca.gov)

# REDUCE CONTAMINATION, so hose assemblies last longer.

After your hose assembly is complete, the final step is to rid the assembly of any possible contamination. Tiny particles could be stuck inside the hose from the fabrication process, so Parker offers several products to help make sure your hose assemblies are contamination free – reducing costly downtime and hose failures.

Our hose cleaning kits include a pellet flushing system, which fires a Styrofoam pellet through the hose assembly dragging out any debris that may be stuck in the hose. It takes only seconds to clean, greatly reducing the chance of a hydraulic system failure.

Along with the pellet flushing system, Parker offers an innovative capping system. Clean Seal is a quick, easy, and clean alternative to cap your hose and fitting assemblies. This reduces contamination, capping time, and cap inventory as one cap may fit many different end configurations and sizes. Simply place the cap on the end of your hose or fitting, place in the Clean Seal System for a few seconds, and remove. The caps enable a secure fit due to the heat shrink technology. Caps can just as easily be removed by pulling the tab that sticks up once heated.

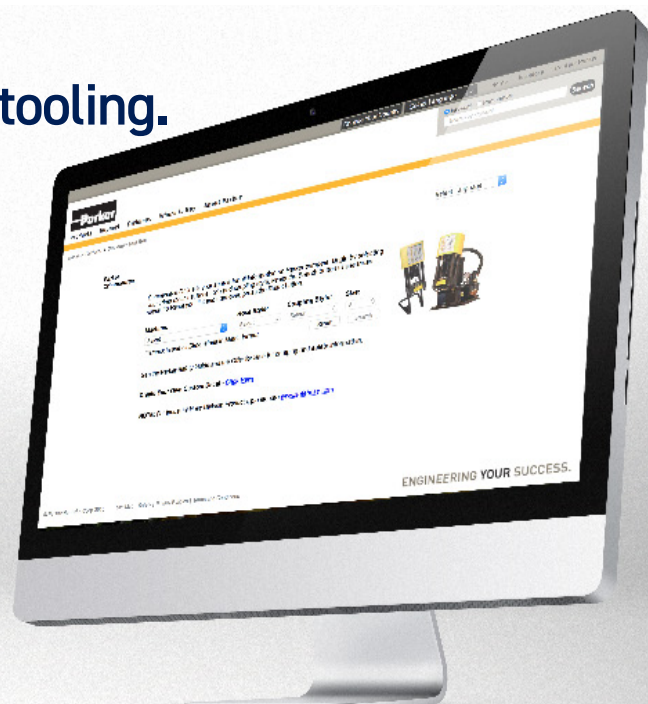


## LET PARKER HELP YOU select the appropriate materials and tooling.

CrimpSource is Parker's exclusive online software application that supplies you with the necessary crimp specifications in order to adhere to our strict safety standards. It is the industry's most complete resource for crimper technical information. It provides easy access to all the specifications necessary to correctly fabricate a factory-quality hose assembly.

With a series of dropdown menus, users are able to choose a crimper, the type of hose, and compatible fittings. Once the crimper is selected, the user is provided with crimp specs, crimper die recommendations, technical manuals, and crimper decals available for immediate printing.

For complete product information on all of Parker's crimpers, please visit:  
[www.parker.com/crimpsource](http://www.parker.com/crimpsource)





Parker Hannifin Corporation  
**Hose Products Division**  
30240 Lakeland Boulevard  
Wickliffe, Ohio 44092  
phone 440 943 5700  
fax 440 943 3129  
[www.parker.com](http://www.parker.com)

BUL.4480-B188 10/2024

© 2024 Parker Hannifin Corporation

