



TOOL CHANGERS

MANUAL, AUTOMATIC
& COMPLIANCE

destaco.com

VISUAL SELECTION GUIDE

MARKETS



AEROSPACE



CONSUMER GOODS



FOOD & PACKAGING



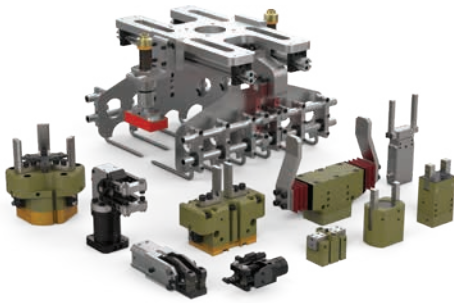
INDUSTRIAL



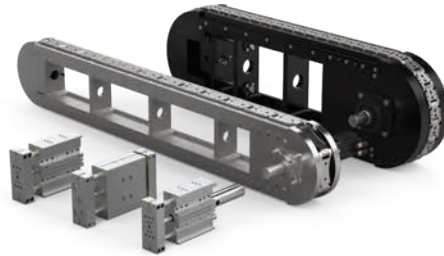
TRANSPORTATION

ABOUT DESTACO

Built on a Strong Foundation



Gripping Solutions



Linear Positioning Solutions



Rotary Positioning Solutions



Clamping Solutions



CRL Remote Handling Solutions



Robotic Tooling Solutions

DESTACO, a Stabilus Group company, is a global leader in the design and manufacture of high-performance automation, workholding and remote-handling solutions. The company serves customers in a variety of end-markets, including the automotive, life sciences, consumer packaged goods, aerospace, industrial and nuclear sectors.

Built on a legacy of more than 100 years, DESTACO offers a comprehensive portfolio of products designed to engineer precise movement, placement and control solutions that drive productivity and uptime for manufacturers around the world. The DESTACO family of products consists of industry-leading brands such as DESTACO Manual Clamps, Power Clamps, and End Effectors; CAMCO™ and Ferguson™ Indexers; Robohand™ Grippers; and CRL™ Manipulators and Transfer Ports.

DESTACO is based in Auburn Hills, Michigan, U.S.A. The company has more than 800 employees with 13 locations, in 9 countries, across the Americas, Europe and Asia.

Stabilus is one of the world's leading providers of motion control solutions for customers across a broad spectrum of industries including mobility, industrial machinery, automation, energy, construction, health, recreation, and furniture. Stabilus offers reliable and innovative solutions that enable, enhance and automate precise movement, placement, as well as opening, closing, lifting, lowering and adjusting actions. The Group, which has its headquarters in Koblenz, has a global production and distribution network with more than eight thousand employees worldwide and generated revenues of €1.2 billion in the 2023 fiscal year. Stabilus SE is listed in the Prime Standard segment of the Frankfurt Stock Exchange and included in the MDAX index.

More information is available at destaco.com and group.stabilus.com



TOOL CHANGERS & COMPLIANCE

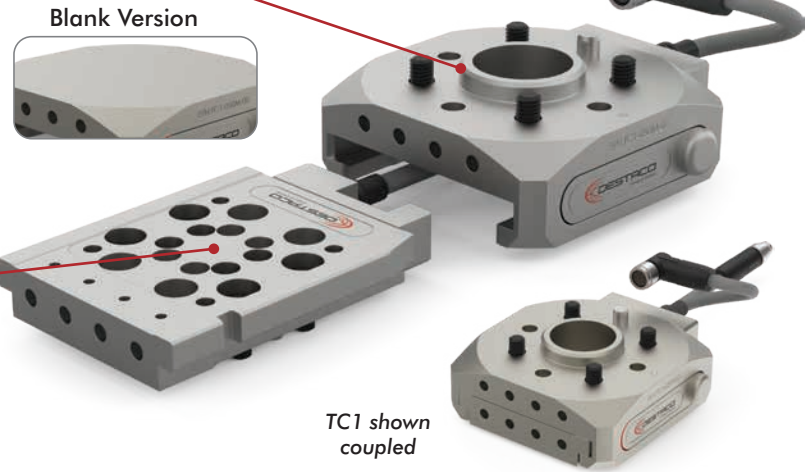
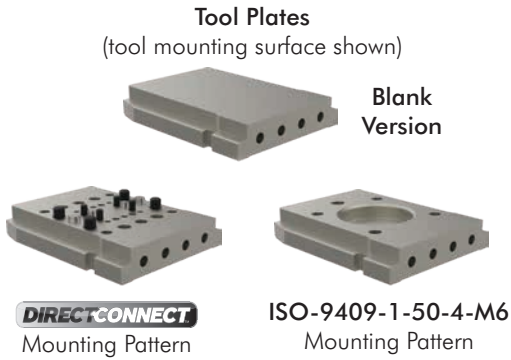
Mounting Overview

TC1 Series

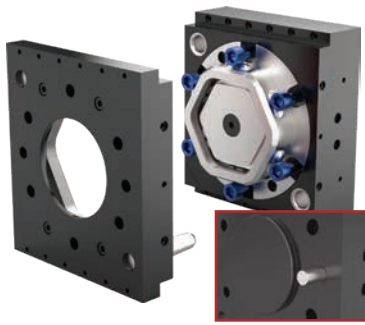
These tool changers are ultralight, compact, and ideal for cobot work cells. Designed for safety, ease of use, durability, and excellent repeatability, this tool changer features a very low profile and a coupling solution with pneumatic and electrical pass-thru capability.

Manual Tool Changer

Robot Plate with ISO-9409-1-50-4-M6 mounting pattern for cobot/robot

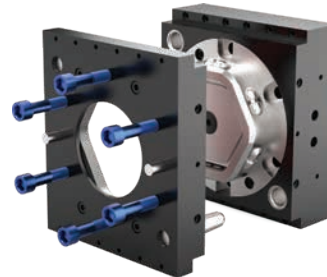


Automatic Tool Changers



RQC Robot Plate Adapter
Strongest locking mechanism in the industry. Raised boss for precision locating and features an ISO9409-1 mounting pattern.

Back Side of RQC



RTP Tool Plate Adapter
Tool plate for RQC tool changers. Tapped holes, two dowel pin holes for accurate location of payload, and features an ISO9409-1 mounting pattern.



QC Robot Plate Adapter
has counterbored holes for mounting and two dowel pins for hole location (size 30 has pilot boss).



TP Tool Plate Adapter
has counterbored holes for mounting and two dowel pins for hole location (size 30 has pilot boss).



RHC Robot Plate Adapter
mounts with screws from behind or through the front and locates with dowel pins for accuracy.

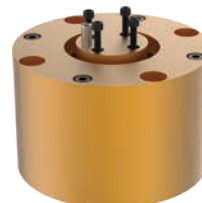


RHC Tool Plate Adapter
mounts payload with screws from behind or through the front and locates with dowel pins for accuracy. Protect cone surfaces from debris to insure proper positioning.

Compliance Devices



CH Horizontal Compliance
The compliance is located using a pilot boss and a dowel pin and assembled using 4 or 6 through body screws.



Tool Mounting
Tooling is located using a centering and a dowel pin and assembled using 4 screws.

TOOL CHANGERS & COMPLIANCE

Sizing and Application Chart

Manual Tool Changer

See Page 6



Specifications:		TC1
Max. Payload:	Kg [lb]	10 [22]
Coupled Weight:	Kg [lb]	0.33 [0.73]
Max Moment (My, Mz, Mx)	Nm [in-lb]	100 [885]
Max Force (Fy, Fz)	N [lbf]	1000 [225]
Max Force (Fx)	N [lbf]	100 [22.5]

Automatic Tool Changers



Series	Page #	Max Moment Kg [lb]		Max Payload Kg [lb]		Weight Kg [lb]		Features																	
		0 to 50 [0 to 110]	50 to 100 [110 to 220]	100 to 500 [220 to 1100]	500 to 1000 [1100 to 2200]	1000 to 2000 [2200 to 4400]	2000 to 3000 [4400 to 6600]	3000 to 4000 [6600 to 8800]	4000+ [9120+]	0 to 50 [0 to 110]	50 to 100 [110 to 220]	100 to 500 [220 to 1100]	500 to 1000 [1100 to 2200]	1000+ [2280+]	0 to 2 [0 to 4.4]	2 to 4 [4.4 to 8.8]	4 to 6 [8.8 to 13.2]	6 to 8 [13.2 to 17.6]	8+ [17.6+]	Optional Modules	Multiple Module Interfaces	Round Design	Rectangular Design	Failsafe Locking	
RQC/RTP-200	10				●																✓	✓	✓	✓	✓
RQC/RTP-400	12					●															✓	✓	✓	✓	✓
RQC/RTP-800	12						●														✓	✓	✓	✓	✓
RQC/RTP-1200	12							●													✓	✓	✓	✓	✓
RQC/RTP-2400	14								●												✓	✓	✓	✓	✓
QC/TP-30	18	●								●											✓	✓	✓	✓	✓
QC/TP-60	18		●								●										✓	✓	✓	✓	✓
QC/TP-60-10	18		●									●									✓	✓	✓	✓	✓
QC/TP-150	18			●									●								✓	✓	✓	✓	✓
RHC-1	22	●									●										✓	✓	✓	✓	✓
RHC-2	22		●									●									✓	✓	✓	✓	✓
RHC-3	22				●																✓	✓	✓	✓	✓
RHC-4	22						●														✓	✓	✓	✓	✓

Compliance Devices



Series	Page #	Max Centering Force Kg [lb]		Max Payload Kg [lb]		Weight Kg [lb]		Misalignment ±mm [±in]		Features															
		0 to 500 [0 to 1100]	500 to 1000 [1100 to 2200]	1000 to 2000 [2200 to 4400]	2000 to 3000 [4400 to 6600]	3000 to 4000 [6600 to 8800]	4000+ [9120+]	0 to 5 [0 to 110]	5 to 10 [110 to 220]	10 to 20 [220 to 1100]	20 to 40 [1100 to 2200]	0 to 1 [0 to 4.4]	1 to 2 [4.4 to 8.8]	2 to 4 [8.8 to 13.2]	4+ [17.6+]	3 [0.12]	5 [0.20]	6.5 [0.25]	8 [0.31]	12 [0.47]	Custom Misalignment	Optional Spring Assist	Harsh Environments	Field Repairable	
CH-50	23	●																			✓	✓	✓	✓	✓
CH-80	23		●																		✓	✓	✓	✓	✓
CH-110	23			●																	✓	✓	✓	✓	✓
CH-140	23				●																✓	✓	✓	✓	✓
CH-165	23					●															✓	✓	✓	✓	✓

TOOL CHANGERS

Automatic Tool Changer Sizing Guide

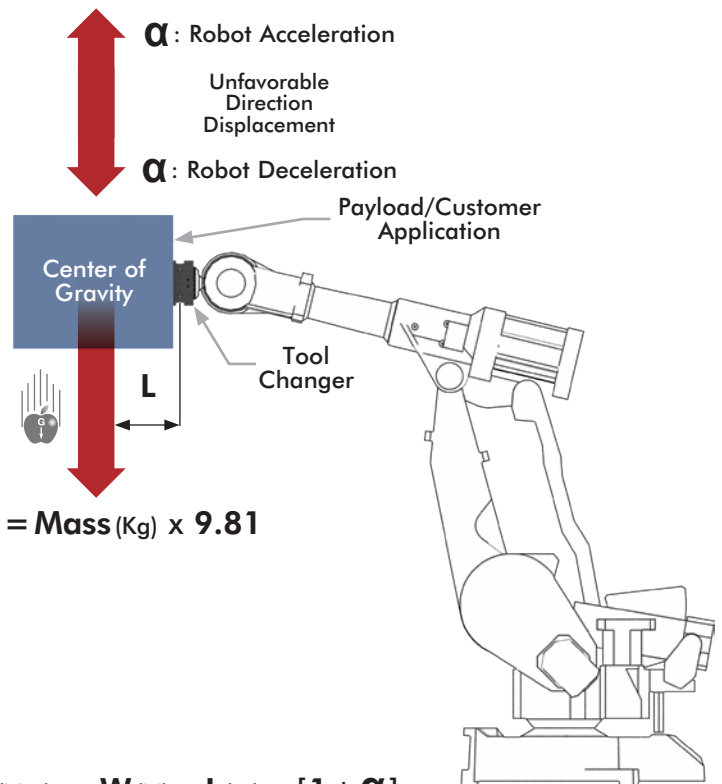
Sizing Guidelines

For tool changer sizing, the maximum effective moment during displacement will be considered. The effective moment will be calculate in the worst case of the application, and must consider:

- The weight of the tool
- The position of the center of gravity
- The dynamic effect due to the maximum acceleration or deceleration. (Emergency stop for example)

See below the simplified calculation formula to estimate the effective moment of your application.

Required Information		
M	Mass of the tool attached on the tool changer	Kg
L	Distance from the payload center of gravity to the tool changer	m
α	Maximum acceleration or deceleration of the robot	g



Effective Moment →

$$M_{t \text{ eff}} (Nm) = W (N) \times L (m) \times [1 + \alpha]$$

CAUTION: Applications with high and wide loads: in case of heavy application, we strongly recommend to strengthen the cylindrical and diamond indexing pins, between tool changer and tool plate, by adding larger diameter pins, the farthest to the center of changer tool, incorporated into the design of the tooling.

Application Example

Application Data	
Mass of tool	90 kg
Center of gravity / Tool Changer	0.5 m
Acceleration (or deceleration) of displacement	2 g

$$M_{t \text{ eff}} = (90 \times 9.81) \times 0.5 \times (1 + 2)$$

$$M_{t \text{ eff}} = 883 \times 0.5 \times 3$$

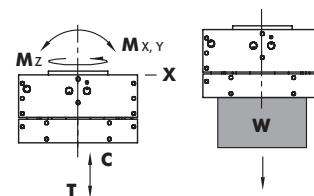
$$M_{t \text{ eff}} = 1324.5 \text{ Nm}$$

Loading Capacity:

Max. Tensile **T**: 2670 N [600 lb]

Max. Compressive **C**: 3560 N [800 lb]

Max. Moment (**M_x/M_y/M_z**) **1580 Nm [14000 in-lb]**



The obtained value 1324.5 Nm should be compared to the technical data of our products in this catalog in the "loading capacity information" section. For this application, the choice will be a RQC-400M tool changer that has a qualifying capacity, in terms of torque, of 1580Nm, over than the 1325Nm of the application.

MANUAL TOOL CHANGERS

TC-1 Series | Ordering Information

CLICK OR SCAN

To view full catalog pages on this product



Base Model **TC1** — Model Size **050** — Robot or Tool Plate **M-01**

Robot Plate

M-00 Application Specific - User adds mounting hole pattern

M-01 ISO-9409-1-50-4-M6 mounting pattern with boss

(See robot compatibility table on next page)

Tool Plate

T-00 Application Specific - User adds mounting hole pattern

T-01 DirectConnect mounting to DESTACO Robohand products

T-02 ISO-9409-1-50-4-M6 mounting pattern



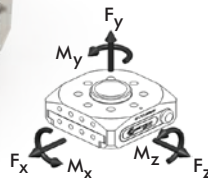
Shown mounted to cobot with robot plate and tool plate coupled.



TC1-050M-01
Robot Plate
ISO 9409 Mounting.

Compatible with multiple brands of cobots.

Patent Pending



Specifications:		TC1
Max. Payload:	Kg [lb]	10 [22]
Coupled Weight:	Kg [lb]	0.33 [0.73]
Robot Plate Weight:	Kg [lb]	0.20 [0.44]
Tool Plate Weight:	Kg [lb]	0.13 [0.29]
Repeatability:	mm [in]	±0.025 [0.001]
Temperature Range:	C° [F°]	-30° to 66° [-22° to 151°]
Max Moment (My, Mz, Mx)	Nm [in-lb]	100 [885]
Max Force (Fy, Fz)	N [lbf]	1000 [225]
Max Force (Fx)	N [lbf]	100 [22.5]



TC1-050T-01
Tool Plate with DirectConnect Robohand Mounting.

Optional Accessories

Description	Order no.
8-Pin M8 Socket Connector Electrical Pass-thru for Robot Plate	TC1-E01M-C01
8-Pin M8 Plug Connector Electrical Pass-thru for Robot Plate	TC1-E02M-C01
8-Pin M8 Plug Connector Electrical Pass-thru for Tool Plate	TC1-E01T-C01
8-Pin M8 Socket Connector Electrical Pass-thru for Tool Plate	TC1-E02T-C01
PNP Magneto-resistive 4mm Sensing Module for Tool Plate	TC1-E01T-P01
NPN Magneto-resistive 4mm Sensing Module for Tool Plate	TC1-E02T-N01
Tool Plate Holder	TC1-050H-01
Seal Replacement Kit	SLKT-480



CLICK OR SCAN

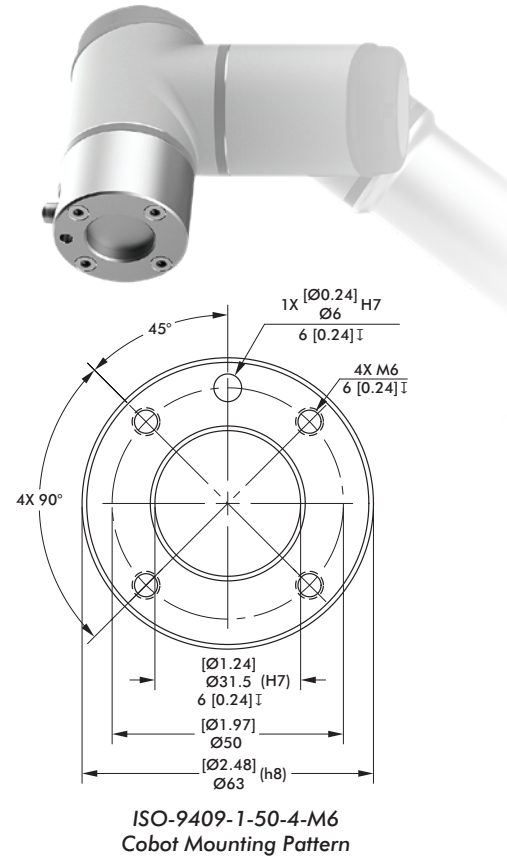
To view full catalog pages on this product

MANUAL TOOL CHANGERS

TC-1 Series | Compatibility Charts

TC1-050M-01 Robot Plate - Robot Compatibility

Robot Manufacturer	Model
GENERIC	Any model with ISO-9409-1-50-4-M6 Pattern
STAUBLI	TX2touch-90, 90L, 90XL
UNIVERSAL ROBOTS	UR3, UR5, UR10, UR16
TECHMAN/OMRON	TM5-700, TM5-900, TM12, TM14
KUKA	LBR iiwa 7 R800, LBR iiwa 14 R820
AUBO	I3, I5, I7, I10
ESI	C-7, C-15
F&P PERSONAL ROBOTICS	P-ROB 2R-24V, 48V
HANWHA PRECISION MACHINERY	HCR-3, 5, 12
JAKA/KUNLIN	ZU 7, 12
MODBOT	COBOT, SCARA
ROZUM	PULSE 75, 90
SIASUN	GCR5, GCR14, GCR20, SCR3, SCR5
HAN'S ROBOTS	ELFIN 3, 5, 10
FRANKA EMIKA	PANDA



TC1-050T-01 Tool Plate - Robohand Compatibility

Robohand Products	Compatible Series	Description
DPE	200-25	Electric 2 Jaw Parallel Gripper
DGC	All Sizes	
DPDL	047, 056, 088, 125	
DPDS		
DPG	All Sizes	
DPL	2520, 2535	
DPP	All Sizes	
DPW	250M, 375M, 500M	
G110, G120	All Sizes	Pneumatic 2 Jaw Parallel Gripper
DCT	12M, 16M, 20M, 25M	
DRF	All Sizes	Pneumatic 2 Jaw Angular Gripper
DRG		Rotary Actuator
DLM		Miniature Linear Rail Thruster Slide
DLT		Linear Thruster Slide
DLB		Linear Base Slide



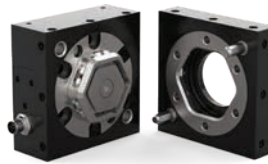
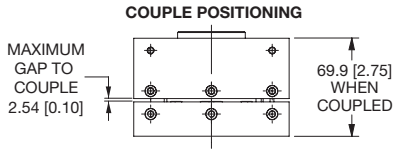
Shown with G120 Parallel Gripper and TC1-E01T-P01 Magneto-resistive Sensors.

AUTOMATIC TOOL CHANGERS

RQC/RTP Series | Technical Information

RQC-200/RTP-200

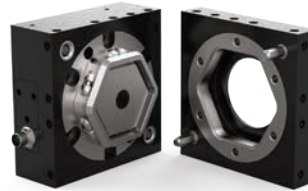
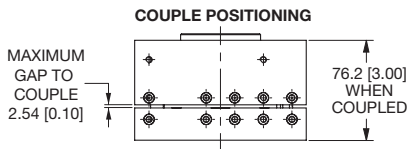
Combined Weight: 3 Kg [6.7 lb]
 Max. Payload*: 90 Kg [200 lb]
 Max. Moment: 810 Nm [7200 in-lb]



RQC-200 Robot Plate
RTP-200 Tool Plate

RQC-400/RTP-400

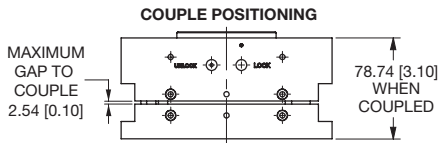
Combined Weight: 4.7 Kg [10.4 lb]
 Max. Payload*: 180 Kg [400 lb]
 Max. Moment: 1580 Nm [14000 in-lb]



RQC-400 Robot Plate
RTP-400 Tool Plate

RQC-800/RTP-800

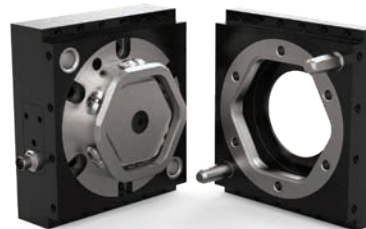
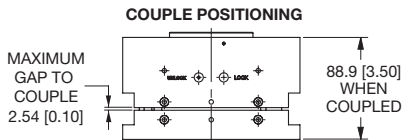
Combined Weight: 7.1 Kg [15.8 lb]
 Max. Payload*: 360 Kg [800 lb]
 Max. Moment: 2490 Nm [22000 in-lb]



RQC-800 Robot Plate
RTP-800 Tool Plate

RQC-1200/RTP-1200

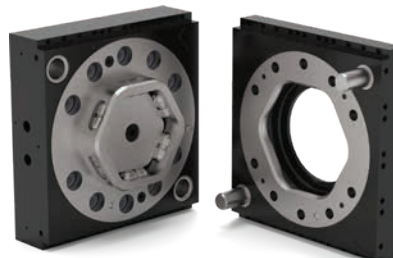
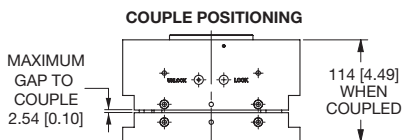
Combined Weight: 8.3 Kg [18.4 lb]
 Max. Payload*: 550 Kg [1200 lb]
 Max. Moment: 3390 Nm [30000 in-lb]



RQC-1200 Robot Plate
RTP-1200 Tool Plate

RQC-2400/RTP-2400

Combined Weight: 30 Kg [66.1 lb]
 Max. Payload*: 1089 Kg [2400 lb]
 Max. Moment: 7000 Nm [61955 in-lb]



RQC-2400 Robot Plate
RTP-2400 Tool Plate

*Depending on your application parameters please contact DESTACO for validation.

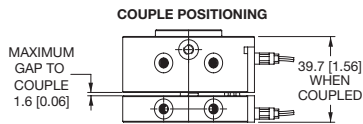
AUTOMATIC TOOL CHANGERS

QC/TP, RHC Series | Technical Information

QC-30/TP-30



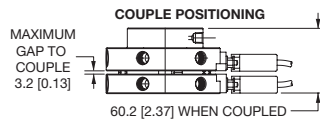
Combined Weight: 0.34 Kg [0.75 lbs]
Max. Payload: 13.6 Kg [30 lbs]
Max. Moment: 22.6 Nm [200 in-lbs]



QC-60/TP-60



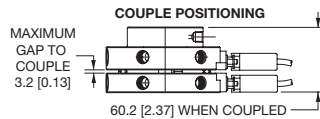
Combined Weight: 1.27 Kg [2.8 lbs]
Max. Payload: 27 Kg [60 lbs]
Max. Moment: 88.1 Nm [780 in-lbs]



QC-60-10P/TP-60-10P



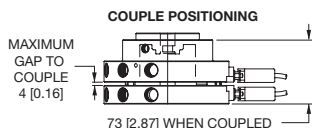
Combined Weight: 1.27 Kg [2.8 lbs]
Max. Payload: 27 Kg [60 lbs]
Max. Moment: 88.1 Nm [780 in-lbs]



QC-150/TP-150



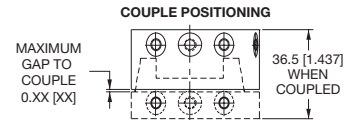
Combined Weight: 3.2 Kg [7.1 lbs]
Max. Payload: 68 Kg [150 lbs]
Max. Moment: 215 Nm [1900 in-lbs]



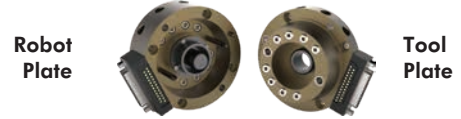
RHC-1-R/ RHC-1-T



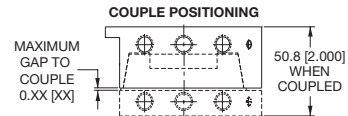
Combined Weight: 0.29 Kg [0.63 lbs]
Max. Payload: 9 Kg [20 lbs]
Max. Moment: 28 Nm [250 in-lbs]



RHC-2-R/ RHC-2-T



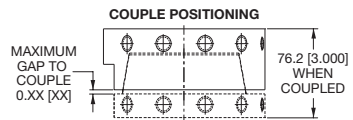
Combined Weight: 0.82 Kg [1.81 lbs]
Max. Payload: 59 Kg [130 lbs]
Max. Moment: 136 Nm [1200 in-lbs]



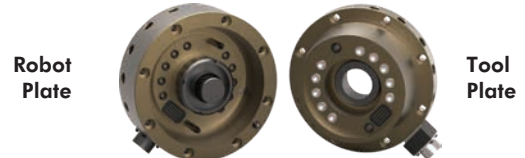
RHC-3-R/ RHC-3-T



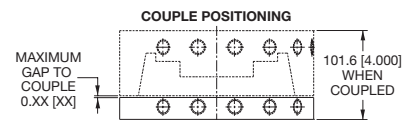
Combined Weight: 3.1 Kg [6.8 lbs]
Max. Payload: 136 Kg [300 lbs]
Max. Moment: 1017 Nm [9000 in-lbs]



RHC-4-R/ RHC-4-T



Combined Weight: 11 Kg [24.3 lbs]
Max. Payload: 454 Kg [1000 lbs]
Max. Moment: 2825 Nm [25000 in-lbs]



AUTOMATIC TOOL CHANGERS

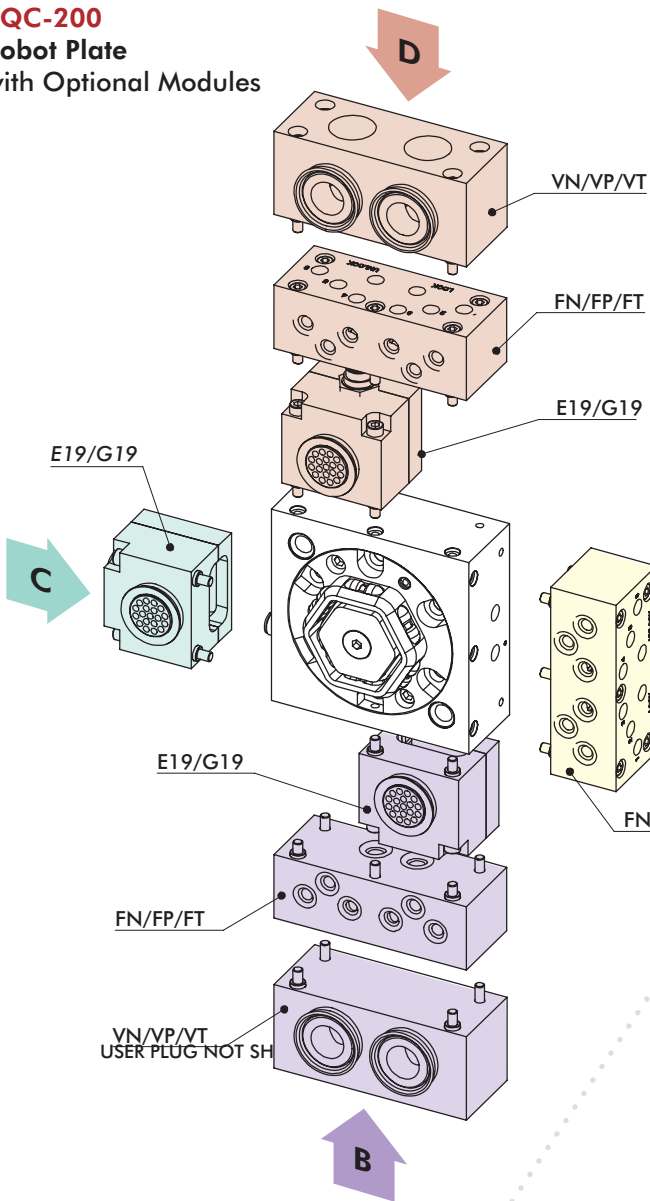
RQC/RTP-200 Series | Module Mounting Guide

CLICK OR SCAN

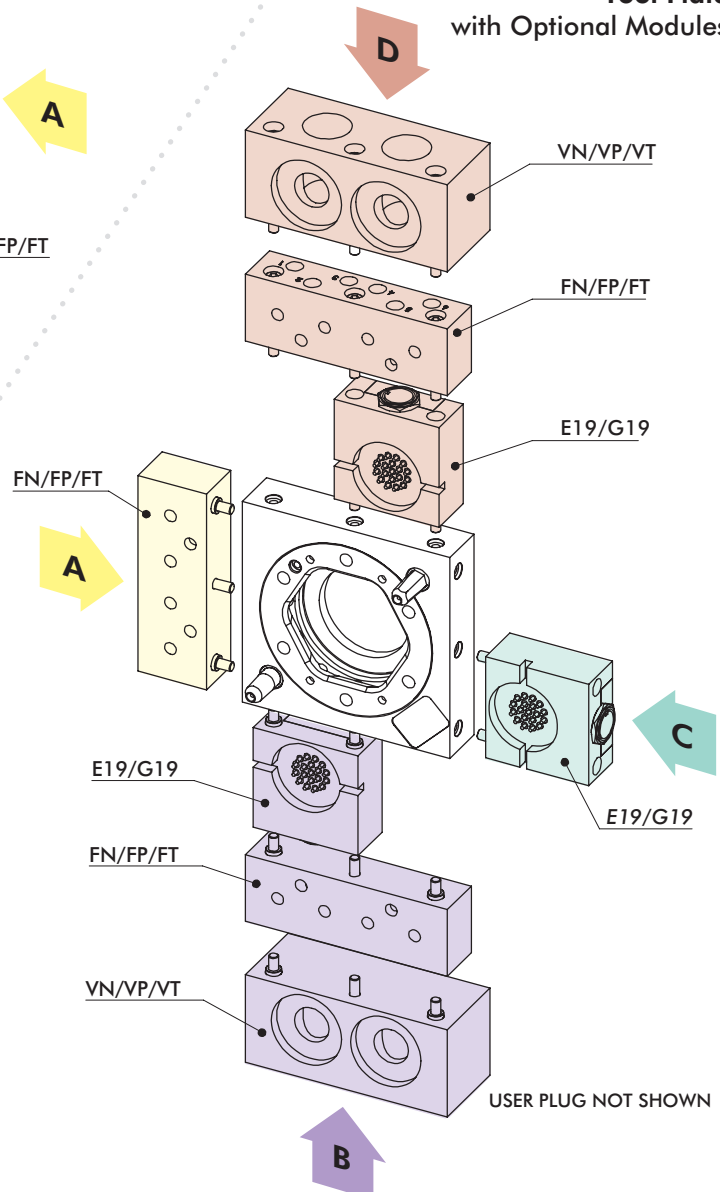
To view full catalog pages on this product



RQC-200 Robot Plate with Optional Modules



RTP-200 Tool Plate with Optional Modules



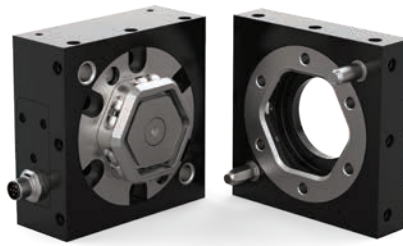


CLICK OR SCAN

To view full catalog pages on this product

AUTOMATIC TOOL CHANGERS

RQC/RTP-200 Series | Ordering Information



Robot Plate RQC-200 Tool Plate RTP-200

Base Model	Model Size	Port Options (RQC-only)	Sensing (RQC-only)	Side A MODULES	Side B MODULES	Side C MODULES	Side D MODULES
RQC	200	N	L0	0	0	0	0
				└──────────────────┘			
RQC Robot Plate	200 (See Page 8 for Specifications)	N 1/8 NPT	L0 No Sensing	<div style="border: 1px solid black; padding: 10px; width: fit-content; margin-left: auto; margin-right: auto;"> <p>Optional Electrical, Air and Vacuum Modules can be ordered with Base Model</p> <p>See below for Module Description</p> <p>(See Page 10 for Illustrated Module Use Configuration)</p> </div>			
RTP Tool Plate		M 1/8 BSPP	LP* PNP Inductive Sensing				
		A 1/8 BSPT	CP† PNP Inductive Sensing with M12 connector				
			LN* NPN Inductive Sensing				
			CN† NPN Inductive Sensing with M12 connector				
			LD* Dry contact sensor				
			CD† Dry contact sensor with M12 connector				

*Requires E19 or G19 module mounted on Side C.
†Cordset or plug are sold separately.

Side A	Side B	Side C	Side D	Order Code	Optional Modules
●	●	●	●	0	No Module
	●	●	●	E19†	19 pin, 3 Amp, 48 VDC Module w/Turck M16 Conn, w/o Cordset
	●	●	●	G19	19 pin, 5 Amp, 120 VDC Module w/Industrial User Conn., w/o Cable
●	●		●	FN	6X 1/8" NPT Air Ports Module, Face Seal, 10 Bar
●	●		●	FP	6X 1/8" BSPP Air Ports Module, Face Seal, 10 Bar
●	●		●	FT	6X 1/8" BSPT Air Ports Module, Face Seal, 10 Bar
	●		●	VN	2X 3/4" Vacuum NPT Ports Module, Face Sealing
	●		●	VP	2X 3/4" Vacuum BSPP Ports Module, Face Sealing
	●		●	VT	2X 3/4" Vacuum BSPT Ports Module, Face Sealing

†Cordset or plug are sold separately.

NOTE: Only (1) module can be mounted per side. Modules usage is based on the size of the Base Model and which side the module can be mounted.

AUTOMATIC TOOL CHANGERS

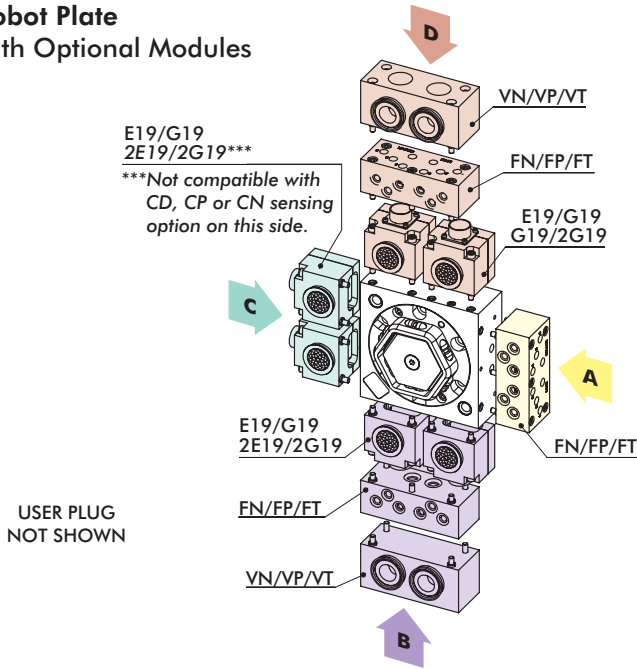
RQC/RTP-400, -800, -1200 Series | Module Mounting Guide

CLICK OR SCAN

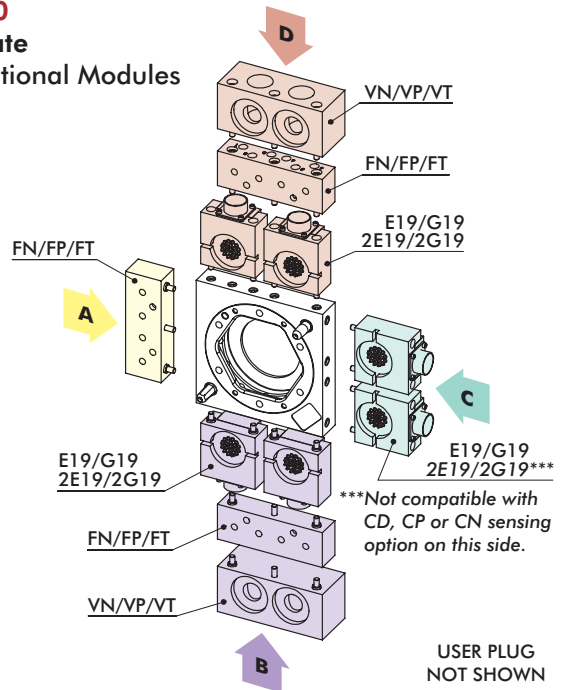
To view full catalog pages on this product



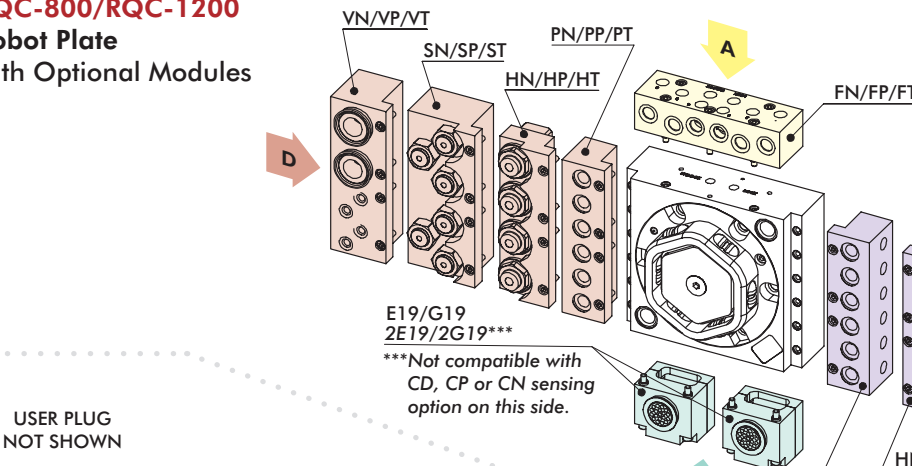
RQC-400 Robot Plate with Optional Modules



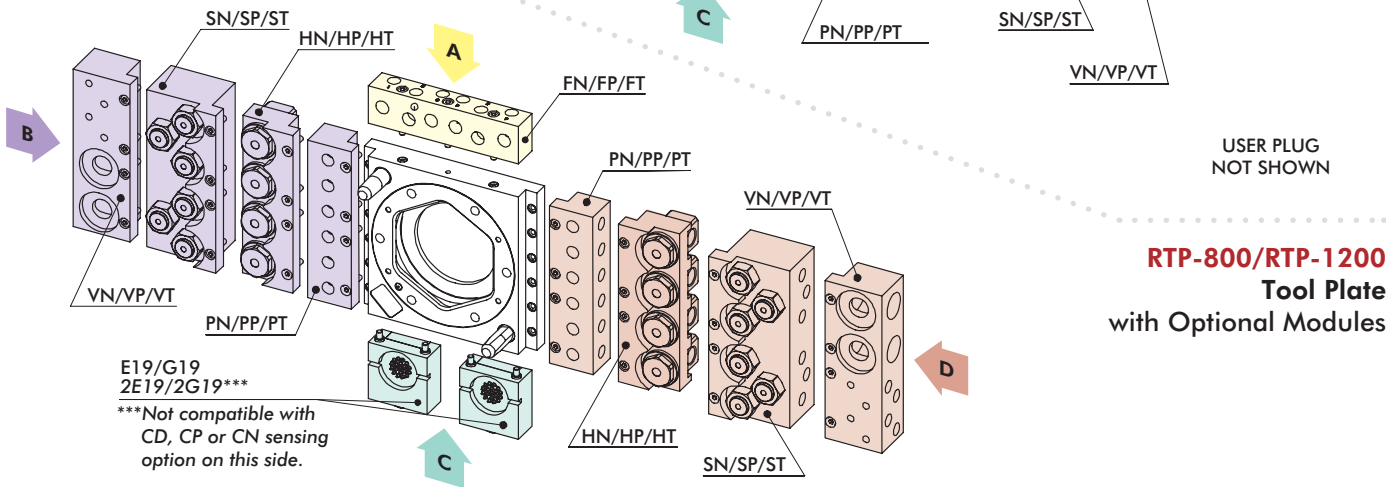
RTP-400 Tool Plate with Optional Modules



RQC-800/RQC-1200 Robot Plate with Optional Modules



NOTE: Only (1) module can be mounted per side (except 2E19, 2G19 which are composed of (2) modules)



RTP-800/RTP-1200 Tool Plate with Optional Modules

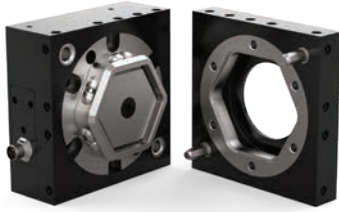


CLICK OR SCAN

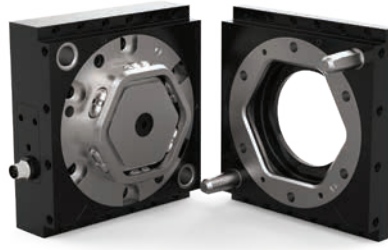
To view full catalog pages on this product

AUTOMATIC TOOL CHANGERS

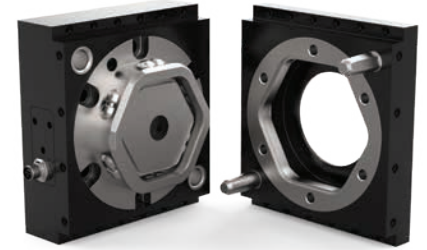
RQC/RTP-400, -800, -1200 Series | Ordering Information



Robot Plate RQC-400
Tool Plate RTP-400



Robot Plate RQC-800
Tool Plate RTP-800



Robot Plate RQC-1200
Tool Plate RTP-1200

Base Model	Model Size	Port Options (RQC-only)	Sensing (RQC-only)	Side A MODULES	Side B MODULES	Side C MODULES	Side D MODULES
RQC	400	N	LO	0	0	0	0
RQC Robot Plate	400 800	N 1/8 NPT	LO No Sensing				
RTP Tool Plate	1200 (See Page TC-RQTP-2 for Specifications)	M 1/8 BSPP	LP† PNP Inductive Sensing				
		A 1/8 BSPT	CP† PNP Inductive Sensing with M12 connector				
			LN† NPN Inductive Sensing				
			CN† NPN Inductive Sensing with M12 connector				
			LD* Dry contact sensor				
			CD† Dry contact sensor with M12 connector				

*Requires E19 or G19 module mounted on Side C.
†Cordset or plug are sold separately.

Optional Electrical, Air, Vacuum and Fluid Modules can be ordered with Base Model

See below for Module Description

(See Page 12 for Illustrated Module Config.)

400	800/1200	Side A	Side B	Side C	Side D	Order Code	Optional Modules
●	●	●	●	●	●	0	No Module
●	●			●		E19†	19 pin, 3 Amp, 48 VDC Module w/Turck M12 Conn, w/o Cordset
●	●			●***		2E19†***	2X 19 pin, 3 Amp, 48 VDC Module w/Turck M12 Conn, w/o Cordset
●	●			●		G19	19 pin, 5 Amp, 120 VDC Module w/Industrial User Conn., w/o Cable
●	●			●***		2G19***	2X 19 pin, 5 Amp, 120 VDC Module w/Industrial User Conn., w/o Cable
●			●	●	●	E19†	19 pin, 3 Amp, 48 VDC Module w/Turck M12 Conn, w/o Cordset
●			●	●***	●	2E19†***	2X 19 pin, 3 Amp, 48 VDC Module w/Turck M12 Conn, w/o Cordset
●			●	●	●	G19	19 pin, 5 Amp, 120 VDC Module w/Industrial User Conn., w/o Cable
●			●	●***	●	2G19***	2X 19 pin, 5 Amp, 120 VDC Module w/Industrial User Conn., w/o Cable
●		●	●		●	FN	6X 1/8" NPT Air Ports Module, Face Seal, 10 Bar
●		●	●		●	FP	6X 1/8" BSPP Air Ports Module, Face Seal, 10 Bar
●		●	●		●	FT	6X 1/8" BSPT Air Ports Module, Face Seal, 10 Bar
	●	●				FN	6X 1/4" NPT Air Ports Module, Face Seal, 10 Bar
	●	●				FP	6X 1/4" BSPP Air Ports Module, Face Seal, 10 Bar
	●	●				FT	6X 1/4" BSPT Air Ports Module, Face Seal, 10 Bar
	●		●		●	PN	6X 1/4" NPT Air Ports Module, Face Seal, 10 Bar
	●		●		●	PP	6X 1/4" BSPP Air Ports Module, Face Seal, 10 Bar
	●		●		●	PT	6X 1/4" BSPT Air Ports Module, Face Seal, 10 Bar
	●		●		●	SN	6X 1/4" NPT Air Ports Module, Self Sealing, 10 Bar
	●		●		●	SP	6X 1/4" BSPP Air Ports Module, Self Sealing, 10 Bar
	●		●		●	ST	6X 1/4" BSPT Air Ports Module, Self Sealing, 10 Bar
●			●		●	VN	2X 3/4" Vacuum NPT Ports Module, Face Sealing
●			●		●	VP	2X 3/4" Vacuum BSPP Ports Module, Face Sealing
●			●		●	VT	2X 3/4" Vacuum BSPT Ports Module, Face Sealing
	●		●		●	VN	2X 3/4" Vacuum + 4 X 1/4" Air NPT Ports Module, Face Sealing
	●		●		●	VP	2X 3/4" Vacuum + 4 X 1/4" Air BSPP Ports Module, Face Sealing
	●		●		●	VT	2X 3/4" Vacuum + 4 X 1/4" Air BSPT Ports Module, Face Sealing
	●		●		●	HN	4X 3/8" NPT Fluid Ports Module, 100 Bar
	●		●		●	HP	4X 3/8" BSPP Fluid Ports Module, 100 Bar
	●		●		●	HT	4X 3/8" BSPT Fluid Ports Module, 100 Bar

†Cordset or plug are sold separately. ***Not compatible with CD, CP or CN sensing option on Side C.

NOTE: Only (1) module can be mounted per side. (Except 2E19 and 2G19, which are composed of (2) modules).
Modules usage is based on the size of the Base Model and which side the module can be mounted.

AUTOMATIC TOOL CHANGERS

RQC/RTP-2400 Series | Module Mounting Guide

CLICK OR SCAN

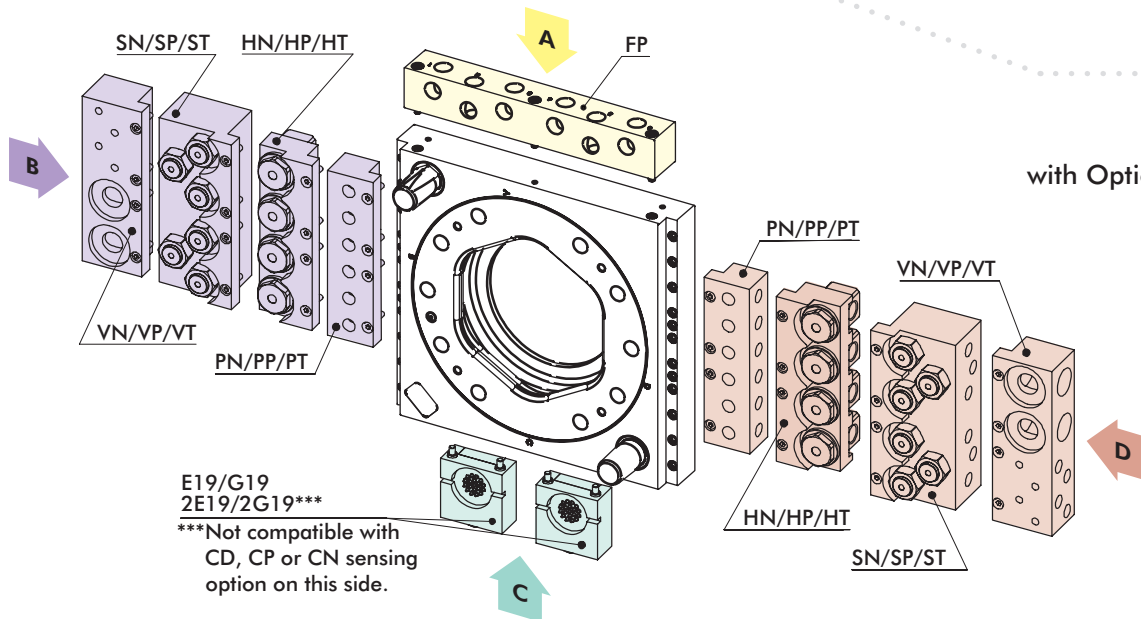
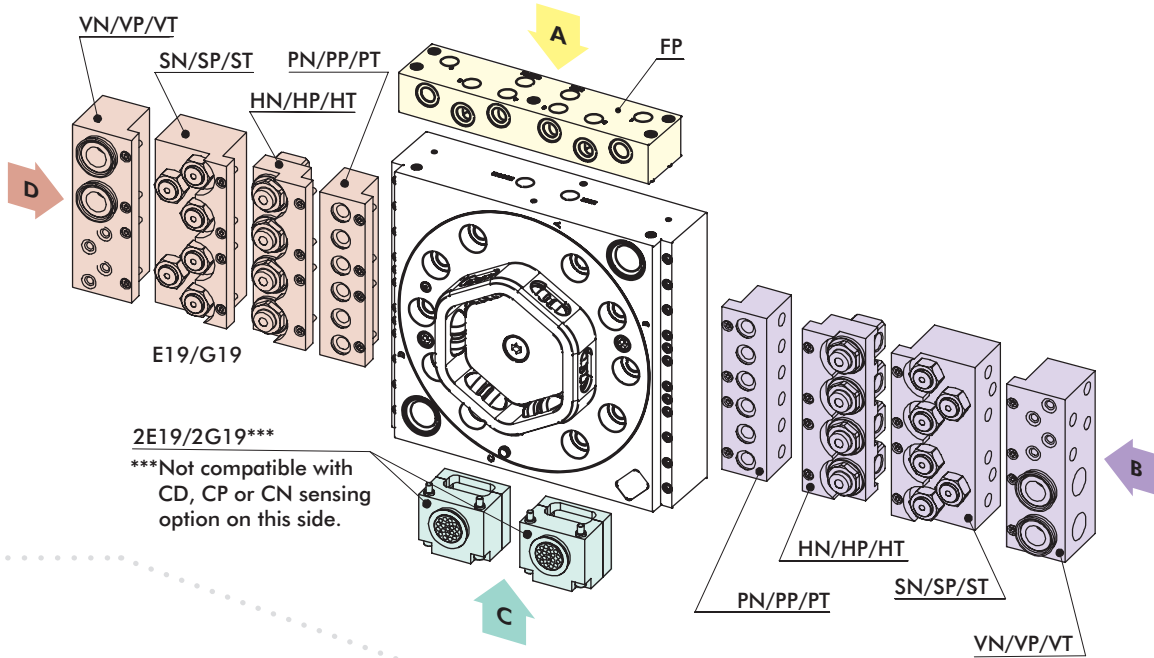
To view full catalog pages on this product



RQC-2400

Robot Plate

with Optional Modules



RTP-2400
Tool Plate
with Optional Modules

USER PLUG NOT SHOWN



CLICK OR SCAN

To view full catalog pages on this product

AUTOMATIC TOOL CHANGERS

RQC/RTP-2400 Series | Ordering Information



Robot Plate
RQC-2400

Tool Plate
RTP-2400

Base Model	Model Size	Port Options (RQC-only)	Sensing (RQC-only)	Side A MODULES	Side B MODULES	Side C MODULES	Side D MODULES
RQC	2400	N	L0	0	0	0	0
RQC Robot Plate	2400 (See Page 8 for Specifications)	N 1/8 NPT	L0 No Sensing				
RTP Tool Plate		M 1/8 BSPP	LP* PNP Inductive Sensing				
		A 1/8 BSPT	CP† PNP Inductive Sensing with M12 connector				
			LN* NPN Inductive Sensing				
			CN† NPN Inductive Sensing with M12 connector				
			LD* Dry contact sensor				
			CD† Dry contact sensor with M12 connector				

*Requires E19 or G19 module mounted on Side C.
†Cordset or plug are sold separately.

Optional Air Modules can be ordered with Base Model
See below for Module Description
(See Page 14 for Illustrated Module Use Configuration)

Side A	Side B	Side C	Side D	Order Code	Optional Modules
●	●	●	●	0	No Module
		●		E19†	19 pin, 3 Amp, 48 VDC Module w/Turck M16 Conn, w/o Cordset
		●***		2E19†***	2X 19 pin, 3 Amp, 48 VDC Module w/Turck M16 Conn, w/o Cordset
		●		G19	19 pin, 5 Amp, 120 VDC Module w/Industrial User Conn., w/o Cable
		●***		2G19***	2X 19 pin, 5 Amp, 120 VDC Module w/Industrial User Conn., w/o Cable
●				FP	6X 1/4" BSPP Air Ports Module, Face Seal, 10 Bar
	●		●	PN	6X 1/4" NPT Air Ports Module, Face Seal, 10 Bar
	●		●	PP	6X 1/4" BSPP Air Ports Module, Face Seal, 10 Bar
	●		●	PT	6X 1/4" BSPT Air Ports Module, Face Seal, 10 Bar
	●		●	SN	6X 1/4" NPT Air Ports Module, Self Sealing, 10 Bar
	●		●	SP	6X 1/4" BSPP Air Ports Module, Self Sealing, 10 Bar
	●		●	ST	6X 1/4" BSPT Air Ports Module, Self Sealing, 10 Bar
	●		●	HN	4X 3/8" NPT Fluid Ports Module, 100 Bar
	●		●	HP	4X 3/8" BSPP Fluid Ports Module, 100 Bar
	●		●	HT	4X 3/8" BSPT Fluid Ports Module, 100 Bar

†Cordset or plug are sold separately. ***Not compatible with CD, CP or CN sensing option.

NOTE: Only (1) module can be mounted per side. (Except 2E19 and 2G19, which are composed of (2) modules). Modules usage is based on the size of the Base Model and which side the module can be mounted.

AUTOMATIC TOOL CHANGERS

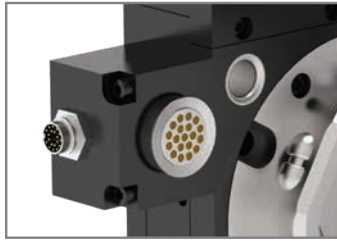
RQC/RTP Series

CLICK OR SCAN

To view full
catalog pages
on this product



Optional Electrical Modules



19 Pin Module 3 Amp - 48 VDC

MODULE REPLACEMENT	ROBOT PLATE	TOOL PLATE
E19	KE19-RQC	KE19-RTP



19 Pin Module 5 Amp - 120 VDC

MODULE REPLACEMENT	ROBOT PLATE	TOOL PLATE
G19	KG19-RQC	KG19-RTP

Module kits above include: 90° Plug Support (without cable), indexing sleeves and hardware.

Air Ports Modules with Face Seals



Robot Plate

MODULE REPLACEMENT	FOR RQC-200/400	FOR RQC 800/1200
FN	KFN-RQC200	KFN-RQC800
FP	KFP-RQC200	KFP-RQC800
FT	KFT-RQC200	KFT-RQC800

Tool Plate

MODULE REPLACEMENT	FOR RTP-200/400	FOR RTP 800/1200
FN	KFN-RTP200	KFN-RTP800
FP	KFP-RTP200	KFP-RTP800
FT	KFT-RTP200	KFT-RTP800

MODULE REPLACEMENT	FOR RQC-2400
FN	KFN-RQC2400

MODULE REPLACEMENT	FOR RTP-2400
FN	KFN-RTP2400

Air Ports Modules with Face Seals (for RQC/RTP-800, -1200, -2400)



Double Shut-Off

MODULE REPLACEMENT	ROBOT PLATE	TOOL PLATE
SN	KSN-RQC800	KSN-RTP800
SP	KSP-RQC800	KSP-RTP800
ST	KST-RQC800	KST-RTP800



CLICK OR SCAN
To view full
catalog pages
on this product

AUTOMATIC TOOL CHANGERS

RQC/RTP Series

Air Ports Module Face Seal (for RQC/RTP-800, -1200, -2400)



MODULE REPLACEMENT	ROBOT PLATE	TOOL PLATE
PN	KPN-RQC800	KPN-RTP800
PP	KPP-RQC800	KPP-RTP800
PT	KPT-RQC800	KPT-RTP800

Module kits above include: Couplings, indexing sleeves and hardware.

Vacuum Ports Modules with Face Seal



Robot Plate

MODULE REPLACEMENT	FOR RQC-200/400	FOR RQC-800/1200/2400
VN	KVN-RQC200	KVN-RQC800
VP	KVP-RQC200	KVP-RQC800
VT	KVT-RQC200	KVT-RQC800

Tool Plate

MODULE REPLACEMENT	FOR RTP-200/400	FOR RTP-800/1200/2400
VN	KVN-RTP200	KVN-RTP800
VP	KVP-RTP200	KVP-RTP800
VT	KVT-RTP200	KVT-RTP800

Fluid Ports Modules, Non-Spilling, Double Shut-Off (for RQC/RTP-800, -1200, -2400)



MODULE REPLACEMENT	ROBOT PLATE	TOOL PLATE
HN	KHN-RQC800	KHN-RTP800
HP	KHP-RQC800	KHP-RTP800
HT	KHT-RQC800	KHT-RTP800

Module kits above include: Couplings, indexing sleeves and hardware.

Electric and Pneumatic Accessories (Ordered Separately)

Electrical and pneumatic accessories are ordered separately.

Please note some electrical accessories can only be used with certain modules for either RQC or RTP "Base Models".

For pneumatic accessories, size of "Base Model" is considered.

ELECTRICAL ACCESSORIES

ELCT-048	90° Female Plug, w/o Cable, Solder Type, Cable Clamp for G19 (RQC Only)
ELCT-049	90° male Plug, w/o Cable, Solder Type, Cable Clamp for G19 (RTP Only)
CABL-028	90° Female M12 Cordset with 2M Cable for CP, CN, and CD (RQC Only)
CABL-029	90° Female Cordset with 4M Cable for E19 (RQC Only)
CABL-031	90° male Cordset with 2M Cable for E19 (RTP Only)
OSRK-004	PNP Inductive Sensor Repair Kit (RQC Only)
OSRK-005	NPN Inductive Sensor Repair Kit (RQC Only)
OSRK-006	Dry Contact Sensor Repair Kit (RQC Only)

PNEUMATIC ACCESSORIES

SLKT-402	RQC-400 Standard Seal Repair Kit
SLKT-403	RQC-800 Standard Seal Repair Kit
SLKT-404	RQC-1200 Standard Seal Repair Kit
SLKT-XXX	RQC-2400 Standard Seal Repair Kit

AUTOMATIC TOOL CHANGERS

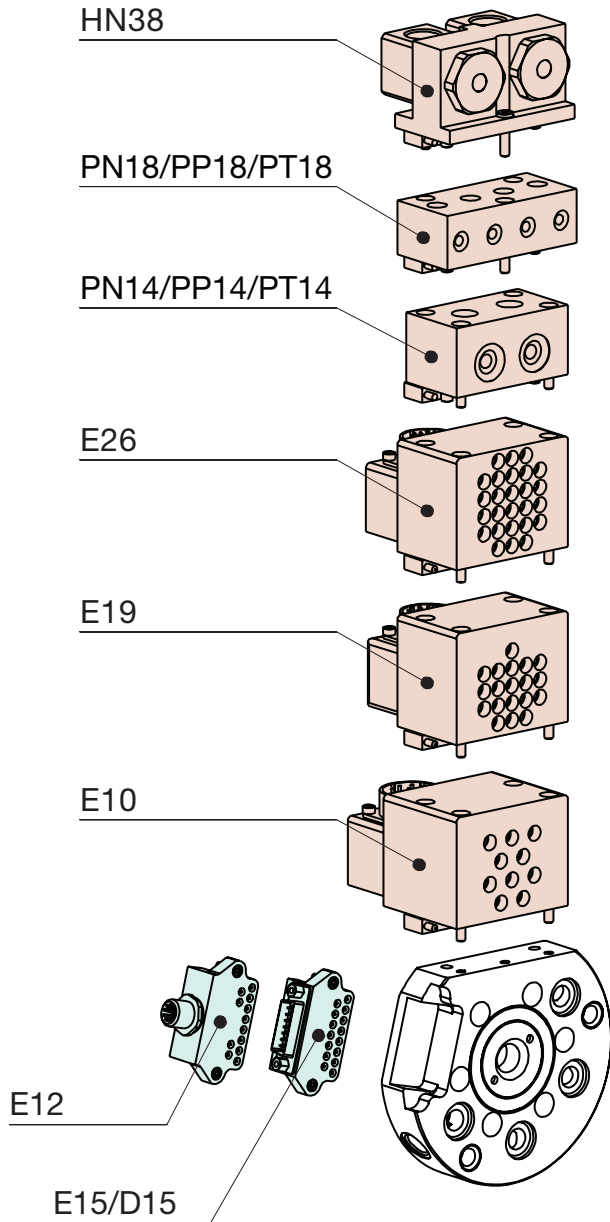
QC/TP Series | Module Mounting Guide

CLICK OR SCAN

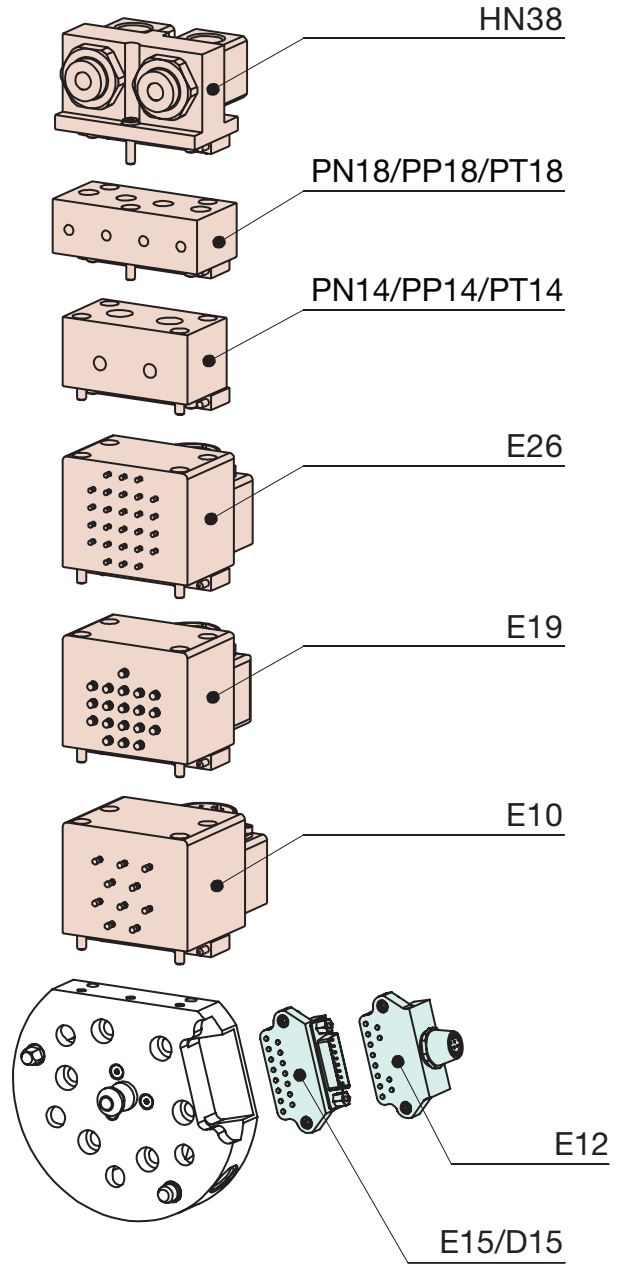
To view full
catalog pages
on this product



QC Series Robot Plate with Optional Modules



TP Series Tool Plate with Optional Modules





CLICK OR SCAN

To view full catalog pages on this product

AUTOMATIC TOOL CHANGERS

QC/TP Series | Module Mounting Guide



Base Model	Model Size	Port Options (QC-only)	I/O Block	Optional Modules*	10-Port (QC/TP-60 only)																						
QC	60	M	E15	PN18	10P																						
QC Robot Plate	30 60 150 (See Page 9 for Specifications)	Blank NPT M BSPP A BSPT (QC-60 and QC-150 only)	0 No I/O Block E15 15-pin, Sub-D D15 (2) X E15 (QC/TP-30 only) E12 12-pin, Turck	<table border="1"> <thead> <tr> <th>Order Code</th> <th>Optional Modules</th> </tr> </thead> <tbody> <tr> <td>E26</td> <td>26-PIN 5A Module</td> </tr> <tr> <td>E19'</td> <td>19-PIN 5A Module</td> </tr> <tr> <td>E10</td> <td>10-PIN 13A Module</td> </tr> <tr> <td>PN18</td> <td>4X 1/8 NPT Pneumatic Port</td> </tr> <tr> <td>PP18</td> <td>4X 1/8 BSPP Pneumatic Port</td> </tr> <tr> <td>PT18</td> <td>4X 1/8 BSPT Pneumatic Port</td> </tr> <tr> <td>PN14</td> <td>2X 1/4 NPT Pneumatic Port</td> </tr> <tr> <td>PP14</td> <td>2X 1/4 BSPP Pneumatic Port</td> </tr> <tr> <td>PT14</td> <td>2X 1/4 BSPT Pneumatic Port</td> </tr> <tr> <td>HN38</td> <td>2X 3/8 NPT Fluid Port</td> </tr> </tbody> </table>	Order Code	Optional Modules	E26	26-PIN 5A Module	E19'	19-PIN 5A Module	E10	10-PIN 13A Module	PN18	4X 1/8 NPT Pneumatic Port	PP18	4X 1/8 BSPP Pneumatic Port	PT18	4X 1/8 BSPT Pneumatic Port	PN14	2X 1/4 NPT Pneumatic Port	PP14	2X 1/4 BSPP Pneumatic Port	PT14	2X 1/4 BSPT Pneumatic Port	HN38	2X 3/8 NPT Fluid Port	
Order Code	Optional Modules																										
E26	26-PIN 5A Module																										
E19'	19-PIN 5A Module																										
E10	10-PIN 13A Module																										
PN18	4X 1/8 NPT Pneumatic Port																										
PP18	4X 1/8 BSPP Pneumatic Port																										
PT18	4X 1/8 BSPT Pneumatic Port																										
PN14	2X 1/4 NPT Pneumatic Port																										
PP14	2X 1/4 BSPP Pneumatic Port																										
PT14	2X 1/4 BSPT Pneumatic Port																										
HN38	2X 3/8 NPT Fluid Port																										

*QC/TP-30 and QC/TP-60-10P cannot be ordered with optional modules

Electric and Pneumatic Accessories (Ordered Separately)

Electrical Accessories

ELCT-047	Straight Female 12-pin D-Sub User Plug, w/o Cable, Solder Type for E15 (QC/TP-60/150)
CABL-021	90° Female Cordset 4M for E12 (QC-30/60/150)
CABL-023	90° Male Cordset 2M for E12 (TP-30/60/150)
CABL-024	Straight Male Cordset 1.2M for E15 (QC/TP-30)
OSRK-009	NPN Inductive Sensor Repair Kit (QC-150 Only)
OSRK-010	PNP Inductive Sensor Repair Kit (QC-150 Only)

Pneumatic Accessories

SLKT-387	Seal Repair Kit (QC-30)
SLKT-388	Face Seal Repair Kit (QC-30)
SLKT-389	Seal Repair Kit (QC-60)
SLKT-390	Face Seal Repair Kit (QC-60/150)
SLKT-392	Face Seal Repair Kit (QC-60-10P)
SLKT-393	Seal Repair Kit (QC-150)

Electrical and pneumatic accessories are ordered separately.

Please note some electrical accessories can only be used with certain modules for either QC or TP "Base Models".

For pneumatic accessories, size of "Base Model" is considered.

AUTOMATIC TOOL CHANGERS

CLICK OR SCAN
To view full
catalog pages
on this product



QC/TP Series

Optional Electrical Modules



10-Pin Module 5Amp @ 120VDC Electric Module

Model	Module	Robot Plate	Tool Plate	*Accessory
QC/TP60	E10	KE10-QC60	KE10-TP60	ELCT-041 (Female)
QC/TP150	E10	KE10-QC150	KE10-TP150	ELCT-042 (Male)

*Straight Plug, (w/o Cable), Solder Type, Cable Clamp



19-Pin Module 5Amp @ 120VDC Electric Module

Model	Module	Robot Plate	Tool Plate	*Accessory
QC/TP60	E19	KE19-QC60	KE19-TP60	ELCT-043 (Female)
QC/TP150	E19	KE19-QC150	KE19-TP150	ELCT-044 (Male)

*Straight Plug, (w/o Cable), Solder Type, Cable Clamp



26-Pin Module 5Amp @ 120VDC Electric Module

Model	Module	Robot Plate	Tool Plate	*Accessory
QC/TP60	E26	KE26-QC60	KE26-TP60	ELCT-045 (Female)
QC/TP150	E26	KE26-QC150	KE26-TP150	ELCT-046 (Male)

*Straight Plug, (w/o Cable), Solder Type, Cable Clamp

Module kits above include: Flat for module mounting, straight plug (without cable), locating pins and hardware.

Air Ports Modules with Face Seals

2 X 1/8"



For QC/TP-60

Module	Robot Plate	Tool Plate
PN14	KPN14-QC60	KPN14-TP60
PP14	KPP14-QC60	KPP14-TP60
PT14	KPT14-QC60	KPT14-TP60
Seal Kit	SLKT-395	---

For QC/TP-150

Module	Robot Plate	Tool Plate
PN14	KPN14-QC150	KPN14-TP150
PP14	KPP14-QC150	KPP14-TP150
PT14	KPT14-QC150	KPT14-TP150
Seal Kit	SLKT-395	---

4 X 1/8"



For QC/TP-60

Module	Robot Plate	Tool Plate
PN18	KPN18-QC60	KPN18-TP60
PP18	KPP18-QC60	KPP18-TP60
PT18	KPT18-QC60	KPT18-TP60
Seal Kit	SLKT-391	---

For QC/TP-150

Module	Robot Plate	Tool Plate
PN18	KPN18-QC150	KPN18-TP150
PP18	KPP18-QC150	KPP18-TP150
PT18	KPT18-QC150	KPT18-TP150
Seal Kit	SLKT-391	---

Module kits above include: Flat for module mounting, seals, locating pins and hardware.



CLICK OR SCAN

To view full catalog pages on this product

AUTOMATIC TOOL CHANGERS

QC/TP Series

Fluid Ports Modules, Non-Spilling, Double Shut-Off



For QC/TP-60

Module	Robot Plate	Tool Plate
HN38	KHN38-QC60	KHN38-TP60

For QC/TP-150

Module	Robot Plate	Tool Plate
HN38	KHN38-QC150	KHN38-TP150

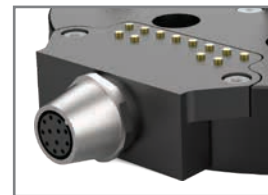
Module kits above include: Flat for module mounting, seals, locating pins and hardware.

Sub-D Conn and User Plug IO Block



15 Pin

Model	Module	Robot Plate	Tool Plate
QC/TP30	E15	KE15-QC30	KE15-TP30
QC/TP60	E15	KE15-QC60	KE15-TP60
QC/TP150	E15	KE15-QC150	KE15-TP60



12 Pin

Model	Module	Robot Plate	Tool Plate
QC/TP30	E12	KE12-QC30	KE12-TP30
QC/TP60	E12	KE12-QC60	KE12-TP60
QC/TP150	E12	KE12-QC150	KE12-TP60

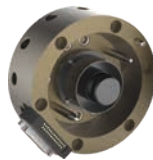
Module kits above include: Flat for module mounting couplings, locating pins and hardware.

AUTOMATIC TOOL CHANGERS

RHC Series | Ordering Information

CLICK OR SCAN

To view full catalog pages on this product



Robot Plate
RHC-1-R

Tool Plate
RHC-1-T

Robot Plate
RHC-2-R

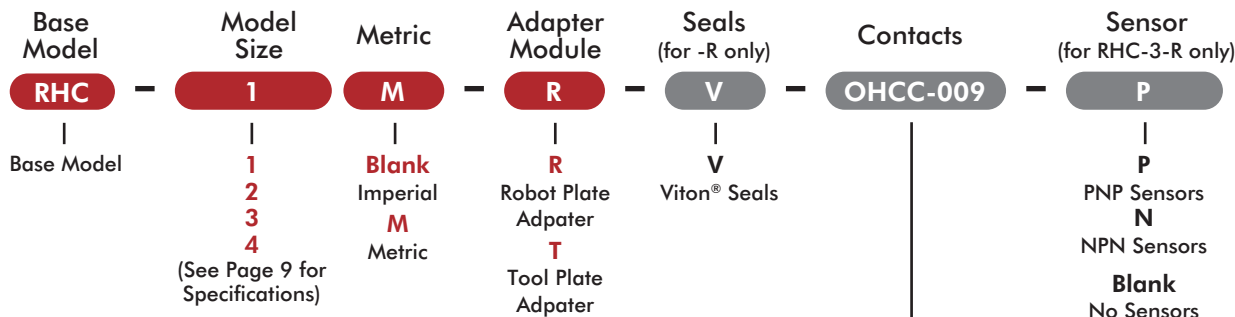
Tool Plate
RHC-2-T

Robot Plate
RHC-3-R

Tool Plate
RHC-3-T

Robot Plate
RHC-4-R

Tool Plate
RHC-4-T



Robot Plate	Optional Contacts
OHCC-009	15 Pin D-Sub Contacts (RHC-1)
OHCC-011	15 Pin D-Sub Contacts (RHC-2, -3)
OHCC-003	25 Pin D-Sub Contacts (RHC-2, -3)
OHCC-005	19 Pin Mil. Spec. Contacts (RHC-3)
OHCC-007	38 Pin Mil. Spec. Contacts (RHC-3)
OHCC-021	24 Pin Mil. Spec. Contacts (RHC-4)
Tool Plate	Optional Contacts
OHCC-010	15 Pin D-Sub Contacts (RHC-1)
OHCC-012	15 Pin D-Sub Contacts (RHC-2, -3)
OHCC-004	25 Pin D-Sub Contacts (RHC-2, -3)
OHCC-006	19 Pin Mil. Spec. Contacts (RHC-3)
OHCC-027	24 Pin Mil. Spec. Contacts (RHC-4)
OHCC-023	24 Wire Single Pigtail Connector (RHC-4)
OHCC-022	24 Wire Double Pigtail Connector (RHC-4)

Sensor and Pneumatic Accessories (Ordered Separately)

Sensor Accessories

- OSMK-064** Replacement Sensor Mounting Kit (RHC-3-R)
- OISP-009** Replacement Locked Position NPN Inductive Sensor with Hard Wired Cable (RHC-3-R)
- OISP-009** Replacement Locked Position NPN Inductive Sensor with Hard Wired Cable (RHC-3-R)
- OSMK-063** Replacement Sensor Mounting Kit (RHC-4-R)
- OISN-008** Replacement Locked Position NPN Inductive Sensor with Hard Wired Cable (RHC-4-R)
- OISP-008** Replacement Locked Position PNP Inductive Sensor with Hard Wired Cable (RHC-4-R)

Pneumatic Accessories

- SLKT-028** Standard Seal Repair Kit (RHC-1-R)
- SLKT-028V** Viton Seal Repair Kit (RHC-1-R)
- SLKT-029** Standard Seal Repair Kit (RHC-2-R)
- SLKT-029V** Viton Seal Repair Kit (RHC-2-R)
- SLKT-030** Standard Seal Repair Kit (RHC-3-R)
- SLKT-030V** Viton Seal Repair Kit (RHC-3-R)
- SLKT-031** Standard Seal Repair Kit (RHC-4-R)
- SLKT-031V** Viton Seal Repair Kit (RHC-4-R)

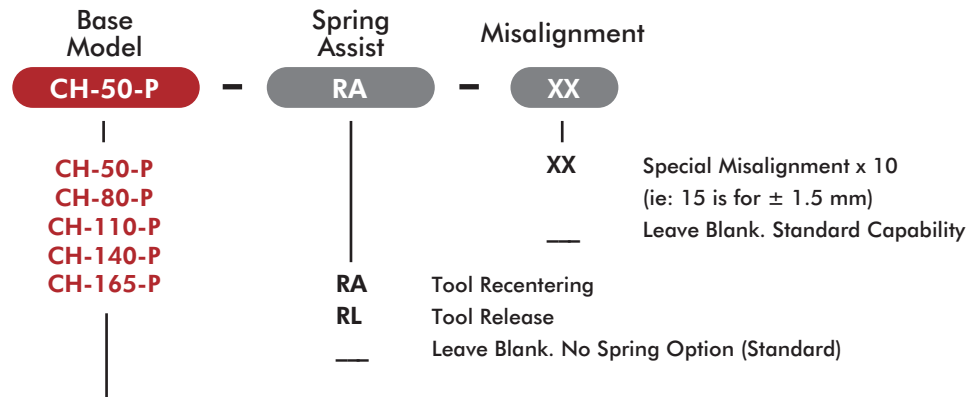
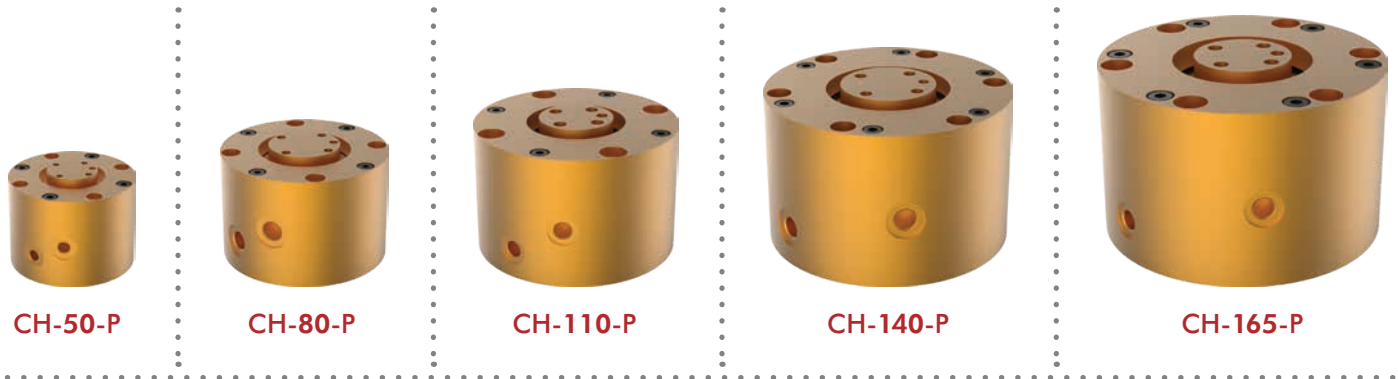


CLICK OR SCAN

To view full catalog pages on this product

COMPLIANCE DEVICE

CH Series Cylindrical Horizontal Device | Ordering Information



Size	Centering Force Nm [in-lb]	Max. Payload Kg [lbs]
CH-50-P	322 [74]	2 [4.4]
CH-80-P	1035 [232]	8 [17.6]
CH-110-P	1660 [373]	14 [30.8]
CH-140-P	3170 [712]	30 [66.1]
CH-165-P	4140 [931]	40 [88.2]

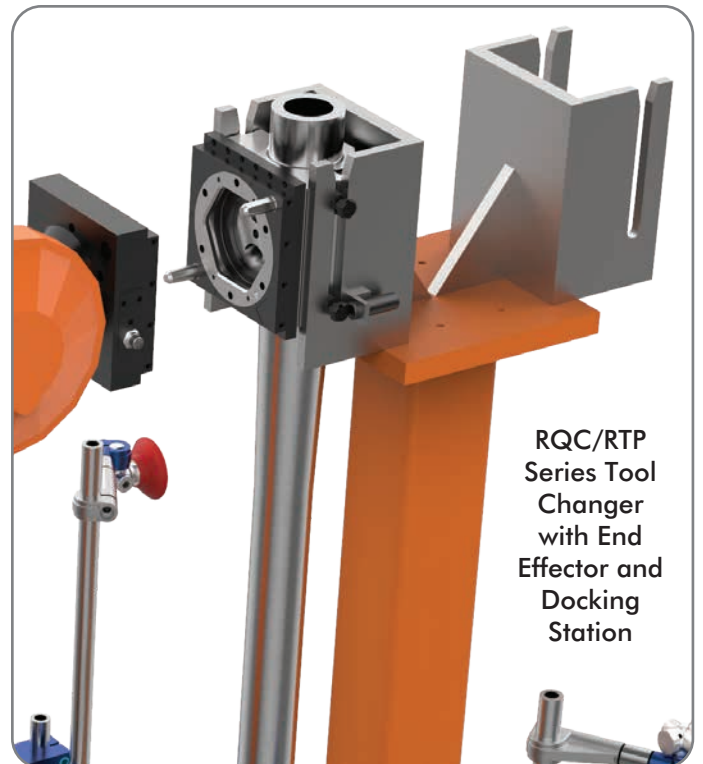
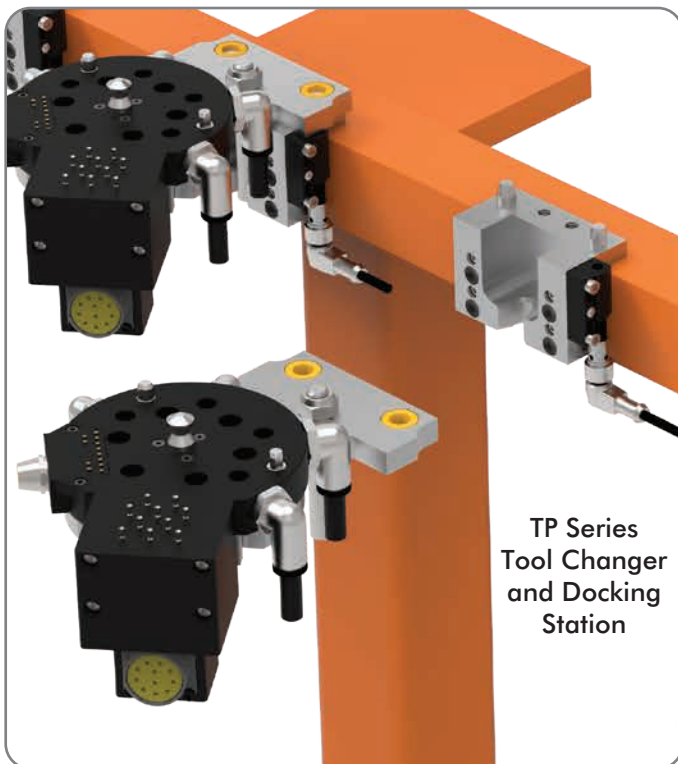
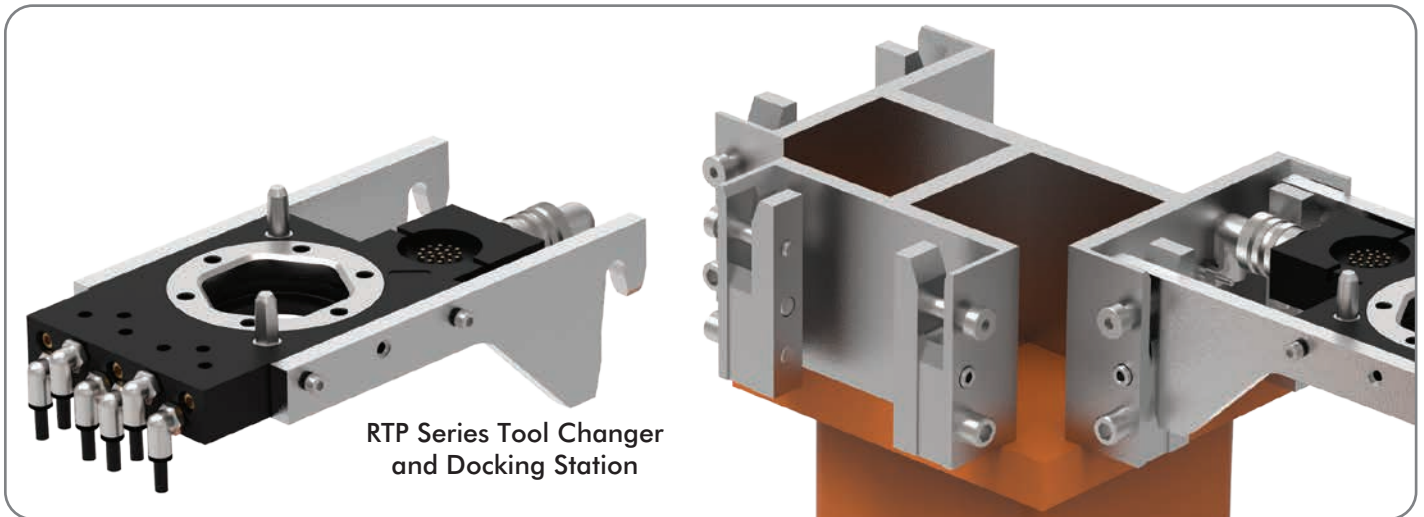
ROBOTIC TOOLING SOLUTIONS

Tool Changer Docking Station

DESTACO offers custom and standard Docking Stations to fit customers needs. Please contact DESTACO Sales for more information.

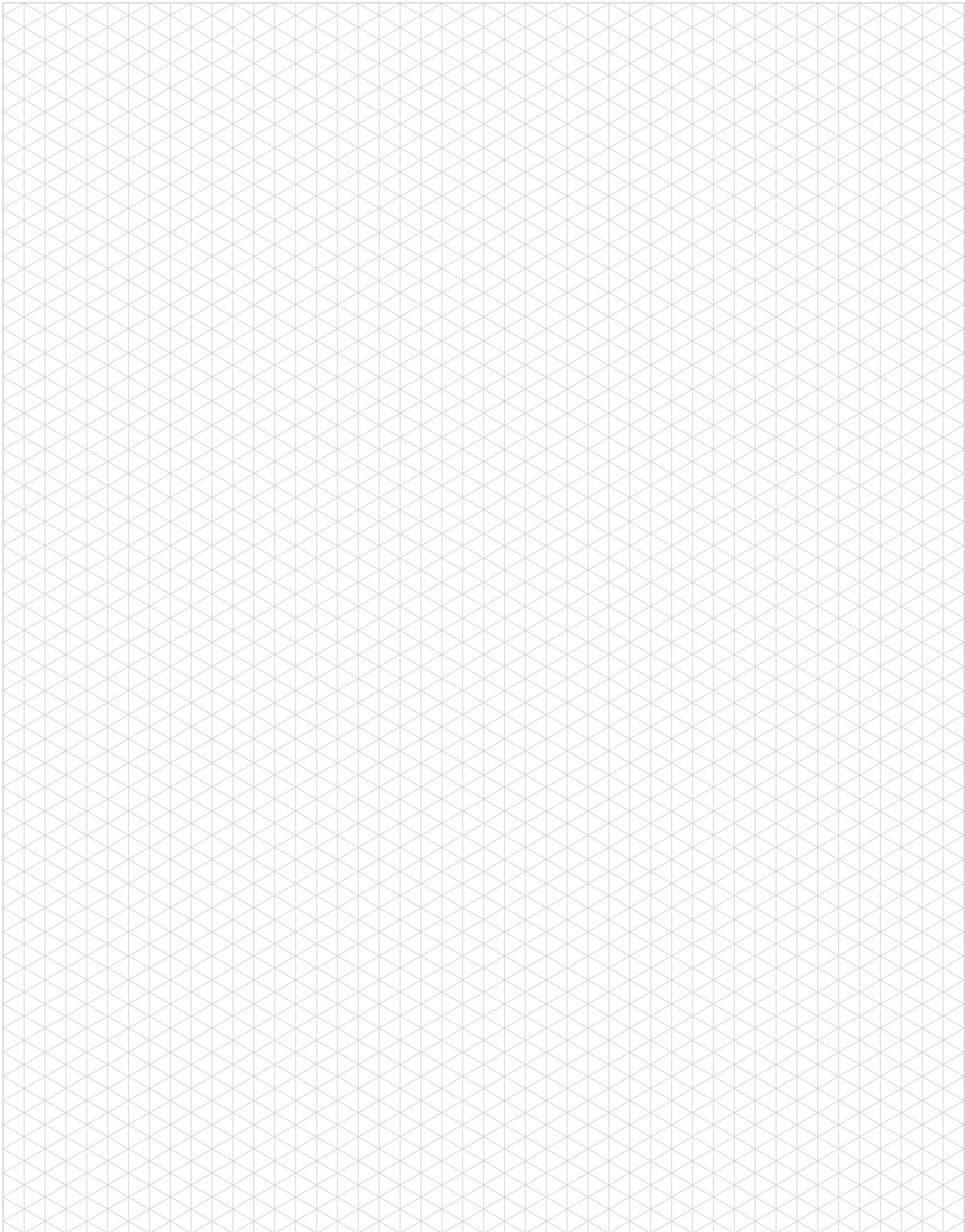
Key Features:

- Allows for quick changing of tooling
- Reducing machine down-time
- Safely stores tooling when not in use
- Standard or custom stations



A large grid of small squares, typical of graph paper, covering the majority of the page. The grid is composed of thin, light gray lines forming a uniform pattern of small squares.

NOTES



OUR PORTFOLIO OF PRODUCTS



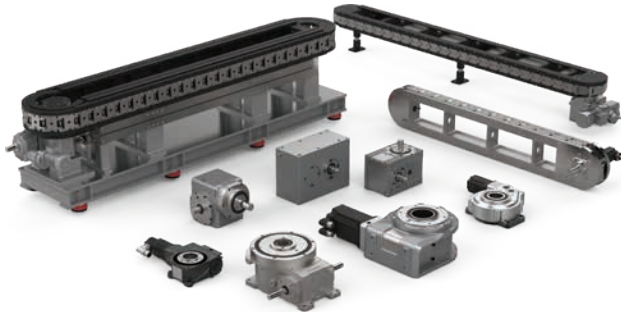
End Effectors (EE)

- Tool Changers
- End-of-Arm Tooling
- Vacuum Products
- Palletizing Solutions



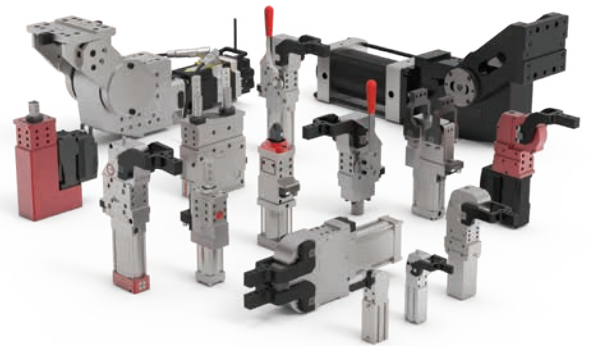
Grippers (GR)

- Electric Grippers
- Pneumatic and Sheet Metal Grippers
- Rotates
- Slides



Indexers (IN)

- Precision Conveyors
- Dial Indexers
- Shaft and Flange Indexers
- Part Handlers



Power Clamps (PC)

- Power Clamps
- Pin Clamps and Packages
- Pivot Units
- Power Cylinders



Manual Clamps (MC)

- Hold Down
- Squeeze Action
- Plunger, Hook and Latch
- Pneumatic Toggle and Swing



Sheet Metal Grippers (SM)

- Accelerate® Press Room
- Cam Type
- Toggle Lock

GLOBAL SALES CONTACTS

CORPORATE HEADQUARTERS



US
+1-888-DESTACO
+1-248-836-6700
northamerica@destaco.com

THE BEST PRODUCTS.
UNMATCHED SERVICE.
WORLDWIDE.



DE
+49-6171-705-0
europe@destaco.com



SP
+34-936361680
spain@destaco.com



PL
+48-506002115
poland@destaco.com



IN
+91-80-41123421-426
india@destaco.com



MX
mexico@destaco.com



FR
+33-4-7354-5001
france@destaco.com



CN
+86-21-6081-2888
china@destaco.com



NL
+31-297285332
benelux@destaco.com



SG
singapore@destaco.com



UK
+44-1902-797980
uk@destaco.com



TH
+66-2-326-0812
asia@destaco.com



CZ
+420-603-577-341
czech@destaco.com



CA
canada@destaco.com



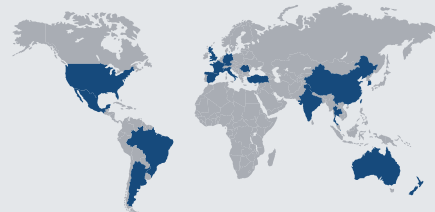
Click or Scan for
the latest PDF version
of this document.



Click or Scan
to learn more
about Stabilus.



Industries



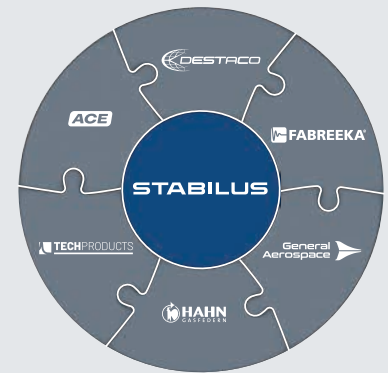
45 Locations in 19 Countries



8K Employees



2023 Revenues



Expert Brands